

More Tales from the Parkway (for the Parkway Centennial)

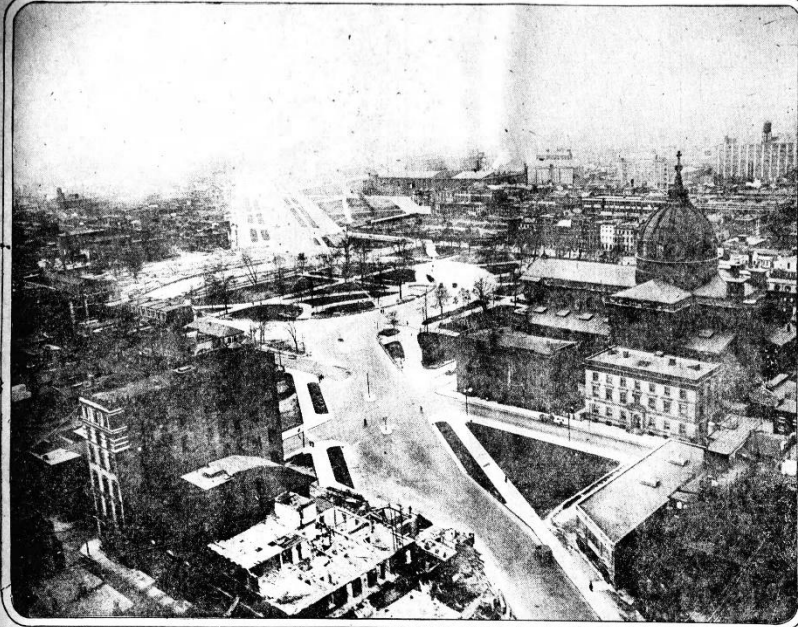


Parkway 100

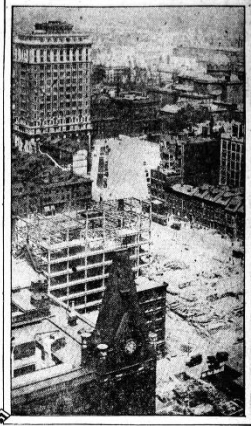
David Brownlee

December 7, 2017

UNINTERRUPTED PARKWAY AT LAST LEADS FROM CITY HALL TO FAIRMOUNT'S ENTRANCE



LOOKING TOWARD FAIRMOUNT PARK. The view from the Bell Telephone Building shows clearly how Logan Square has been transformed into a circle. Broad since the time of Chew, and one of his branching streets, it is now almost obliterated by what has been declared the traffic executive of the development of the driveway at the park.



THE PARKWAY LAST MAY, when the Medical-Chi College and Hospital, between Broad and Arch streets, still blocked the driveway.



THE PARKWAY FROM FIFTEENTH AND FILBERT STREETS. The Pennsylvania station at the extreme left of the picture, at the right, the temporary buildings used in connection with the work on the driveway loop around City Hall.

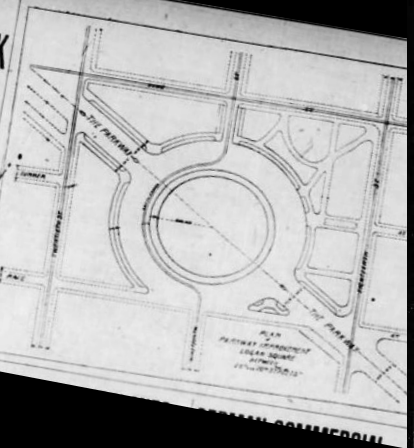


LOOKING TOWARD CITY HALL. In the middle distance the square from Broad street to Fifteenth street, and from Arch street to Filbert street, used at present as a storage place in connection with the work on the driveway.

PARKWAY IS OPEN
FROM HALL TO PARK

City's Main Drive, Free for Traffic, Over Connecting Roads

Work, Made Possible by 1916 Loans, Provides Circle at Logan Square



Realization of Philadelphia's dream come true with the opening of the Parkway has its main driveway of the city is now serviceable for its full length, from City Hall to Fairmount Park. Work on the final section, from Twenty-third street to the Park was completed yesterday. Vehicles and pedestrians can travel freely over the Parkway from Broad street to Fairmount Park.

Until a few days ago the chief interruption to finishing the great boulevard was at Logan Square, where work is now being rapidly pushed to carry the improvement through this section. Last Tuesday, a temporary driveway through Logan Square was opened. This connected the main driveway at Eighteenth street with its continuation at Nineteenth street. While development of the Parkway has been vigorous at Logan Square and on the final section from Twenty-third street to Twenty-fifth street. This includes the extension of the Parkway's features, extending from Caltonhill to Spring and Twenty-fourth streets.

The work was made possible through the funds available from the loans of 1916. Two years ago no semblance of a parkway was visible east of Sixteenth street or west of Twenty-second street except in the latter temporary driveway in 1916. Two years ago that street was constructed Broad street westward to Logan Square. Since that time progress has only been delayed by the war and the present epidemic of influenza.

War Buildings Still Stand
Buildings formerly owned by the Medical-Chi College and Hospital between Seventeenth and Eighteenth streets, which were allowed to remain in the war, called for the need of a temporary driveway within this block. Director Duesman, acting through Park Department, engineer in charge of the Parkway, is about to replace this temporary driveway with a permanent one. The buildings in permanent in Seventeenth to Eighteenth streets.

ough provide plans for the completed nature that will make it extremely interesting about Logan Square, its beautiful and elaborate. Already work has advanced considerably. Already extending from the temporary through Logan Square. The driveway at Logan Square, circular, with a central plot of the circle. Special design on these squares will be carried out on a limited scale. These designs will make this part of the circular improvement very noticeable beyond the present unimproved street in order to guard the car tracks in Nineteenth street.

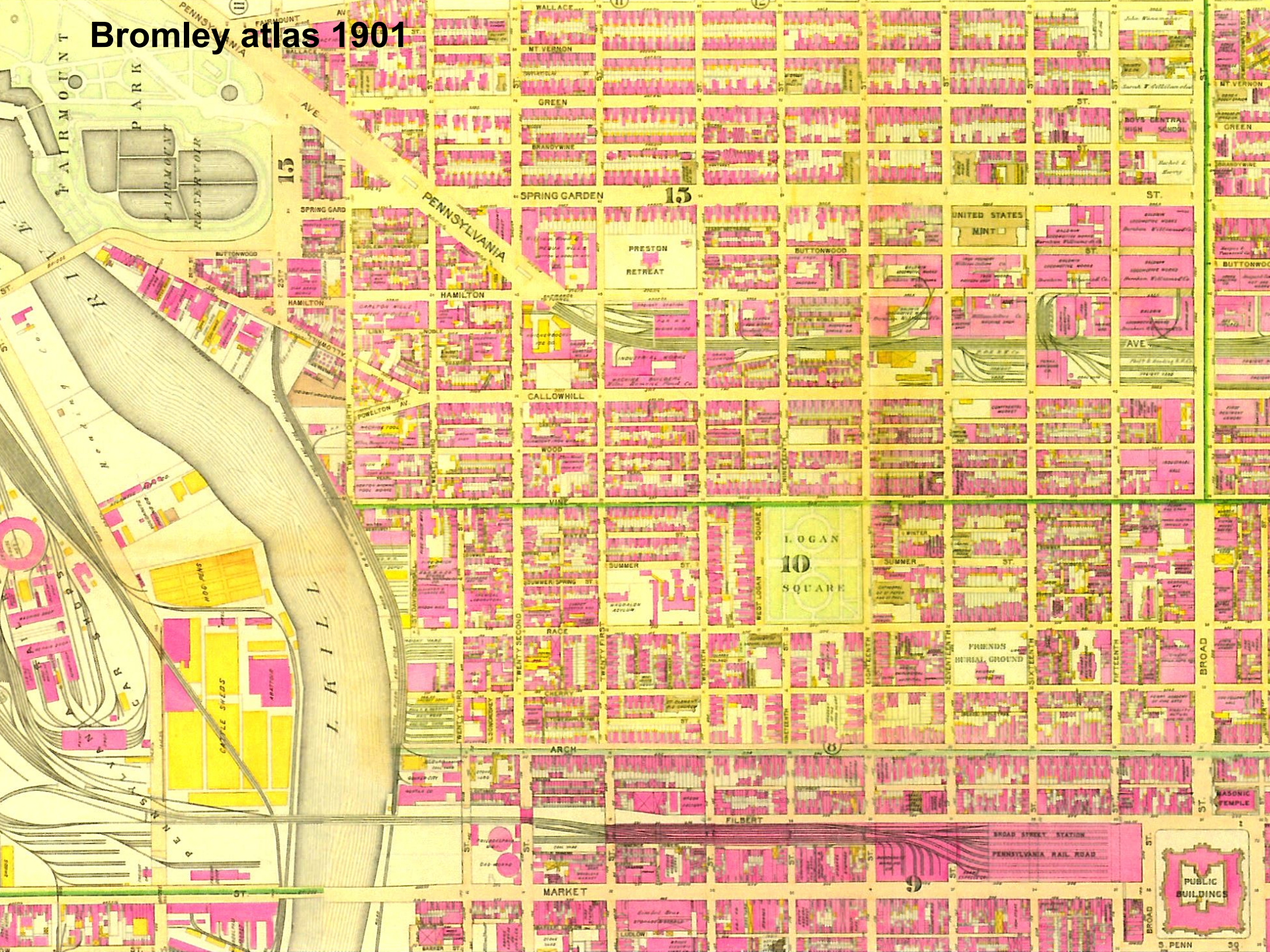
Twenty-fifth street has been opened, because construction is interfered with by the mill building with the use of the Parkway. It is to stand because it is being dismantled for materials. Along the main driveway, between the Twenty-fifth and Twenty-seventh streets, the termination of the main street is complete. A \$1,000,000 building is to be constructed.

Inquirer
October 27, 1918

Evening
Public Ledger
November 16, 1918

Before the Parkway

Bromley atlas 1901



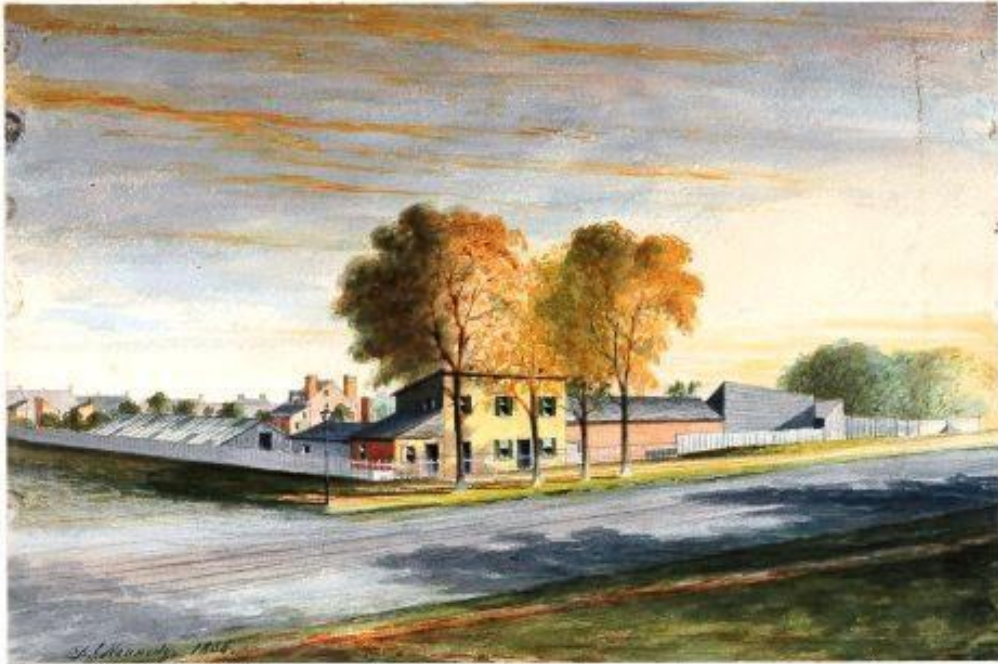


Balloon photo
4 July 1893

1908



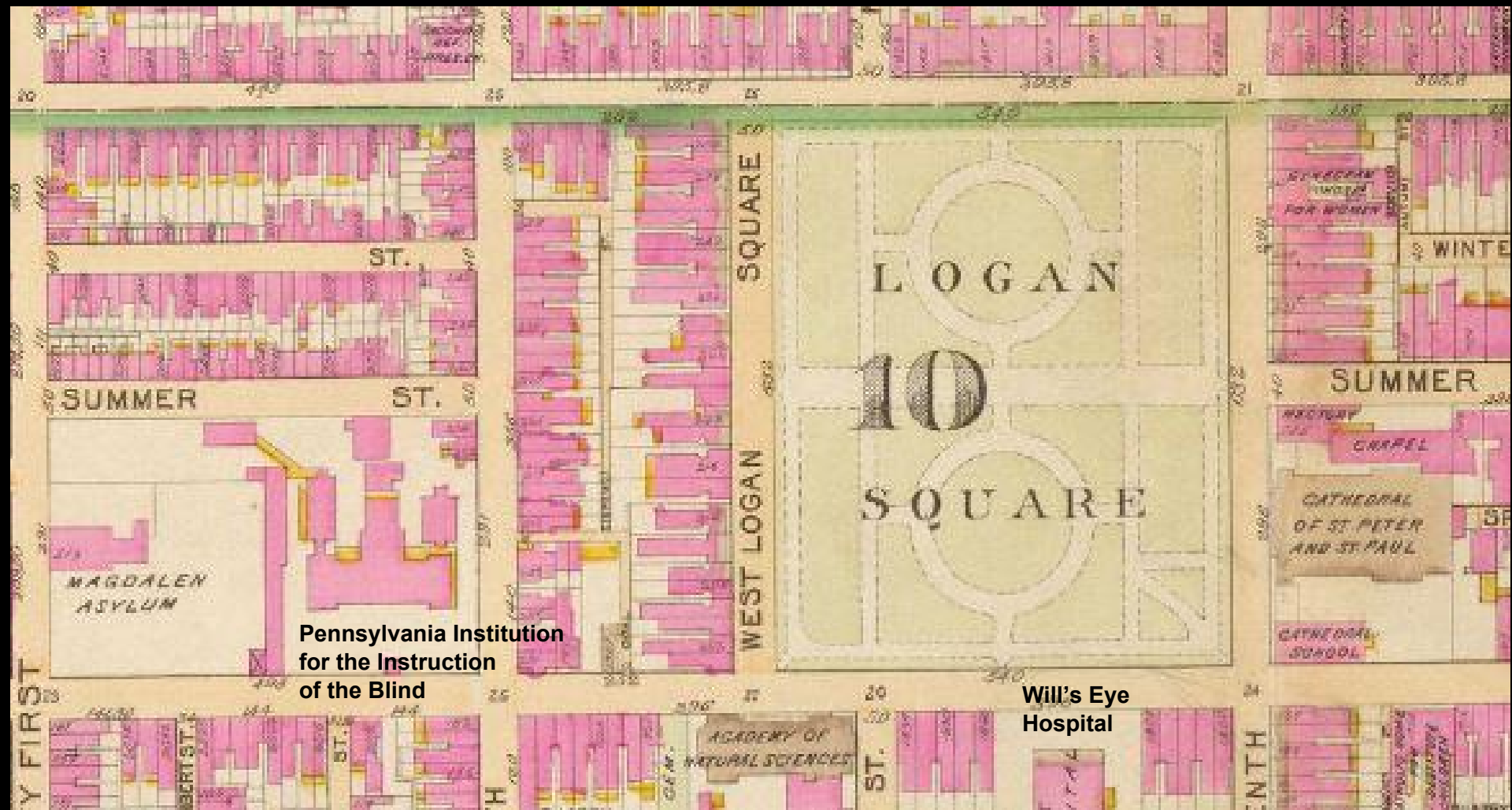
**Dryburgh Nursery
Logan Square
David Kennedy 1836**



37 Residence and Nursery of Mr Dryburgh in 1836.
South West corner of 4th and Race Streets when Logan Square was an open common.
Demolished preparatory to the erection of the new Academy of Natural Sciences.



Logan Square, (Potter's field) from Vine Street looking towards Market in 1836. S. Finney.



**Pennsylvania Institution
for the Instruction
of the Blind**

**Will's Eye
Hospital**

Bromley atlas 1901

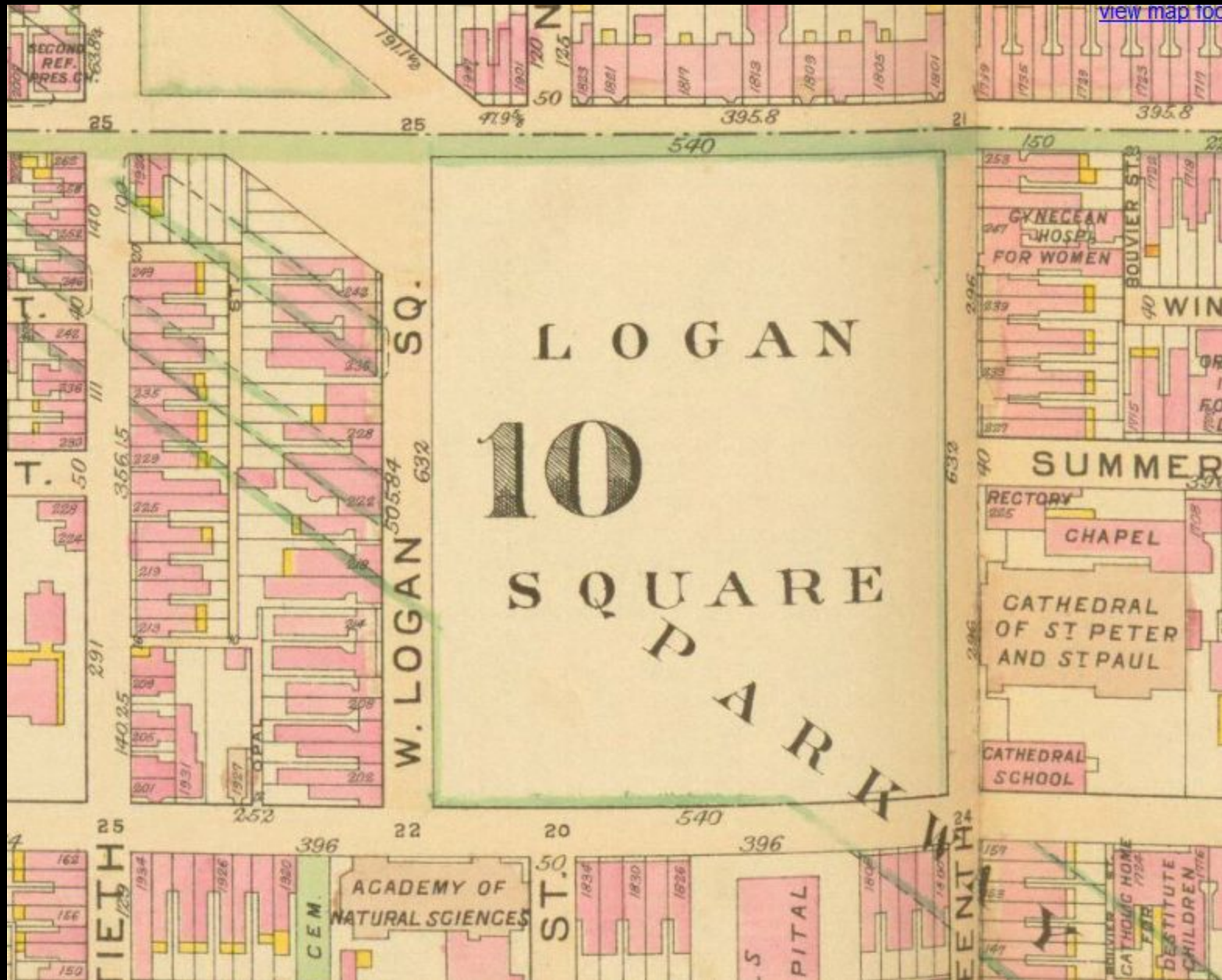
**T.U. Walter
Wills Eye Hospital
1831-34**



**James Windrim
Academy of Natural Sciences
1868-76**

**Napoleon LeBrun
(façade by John Notman)
Cathedral of SS. Peter and Paul
1846-64**







3987


Logan Square looking west 1910

4-16-1910

West Logan Square ("19th Street")



1 August 1912

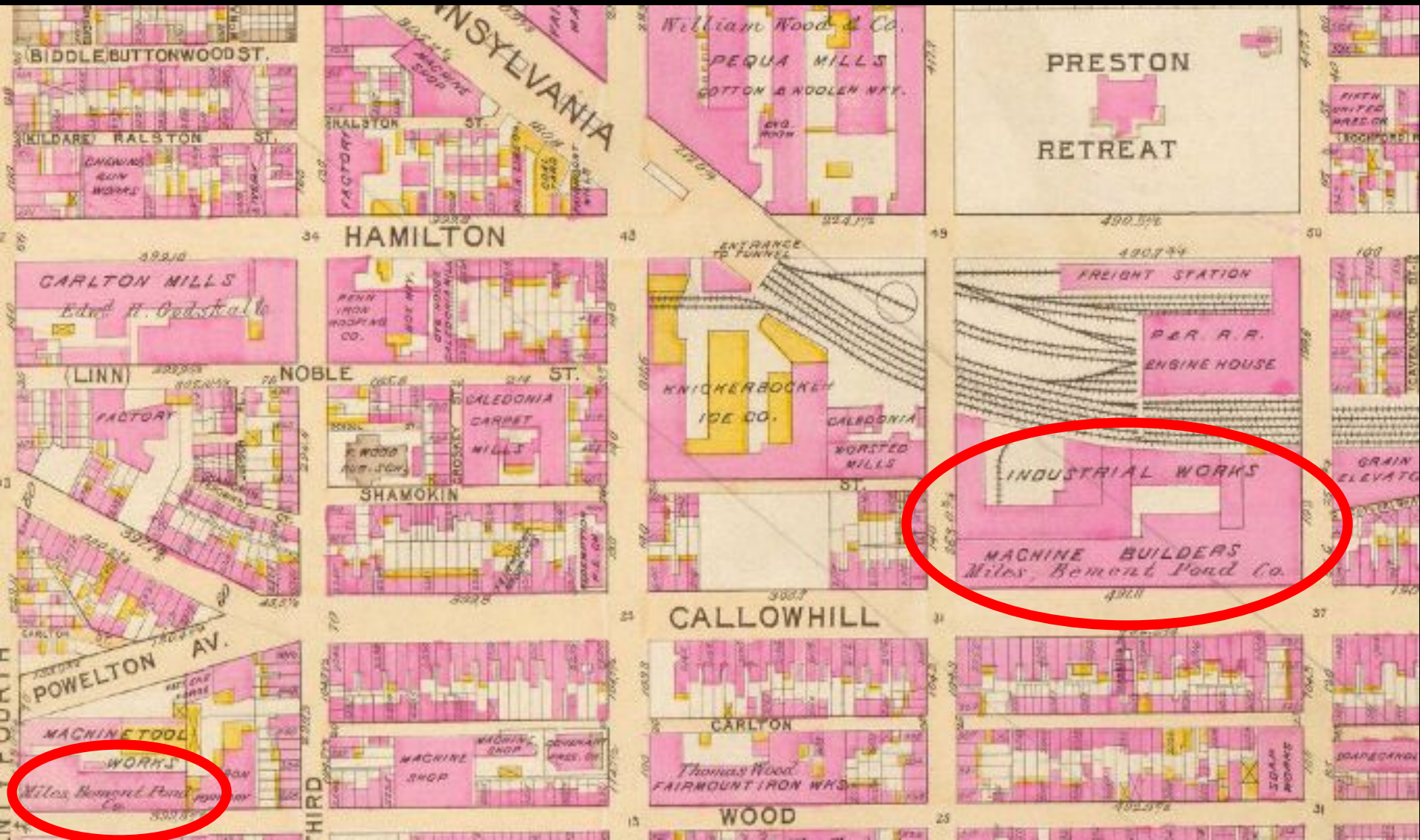


**West Logan Square
("19th Street") ca. 1915**

↑ Rudolph Blankenburg house (214)

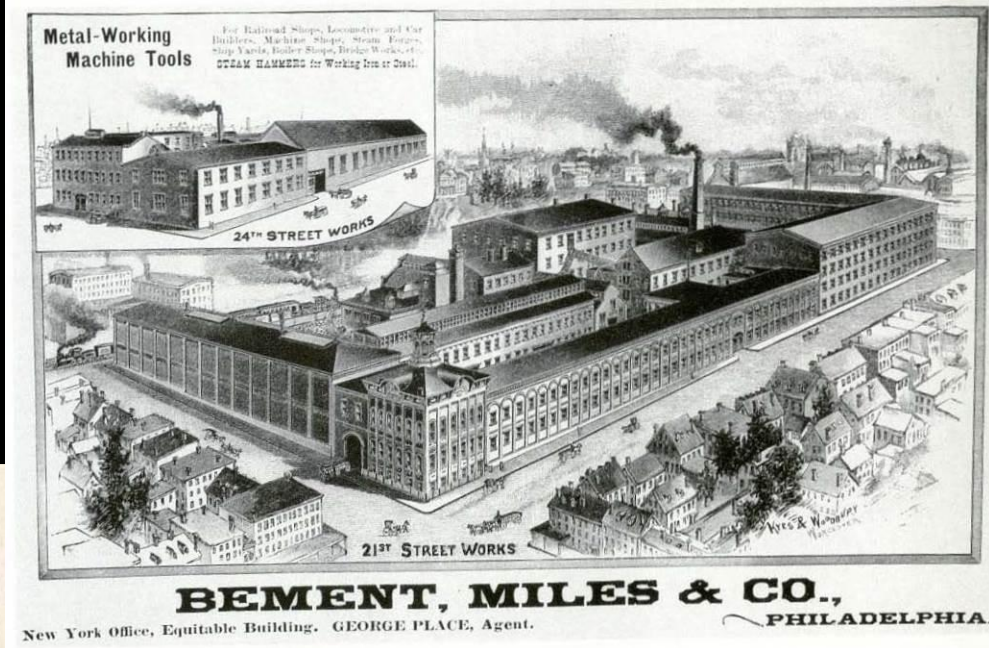
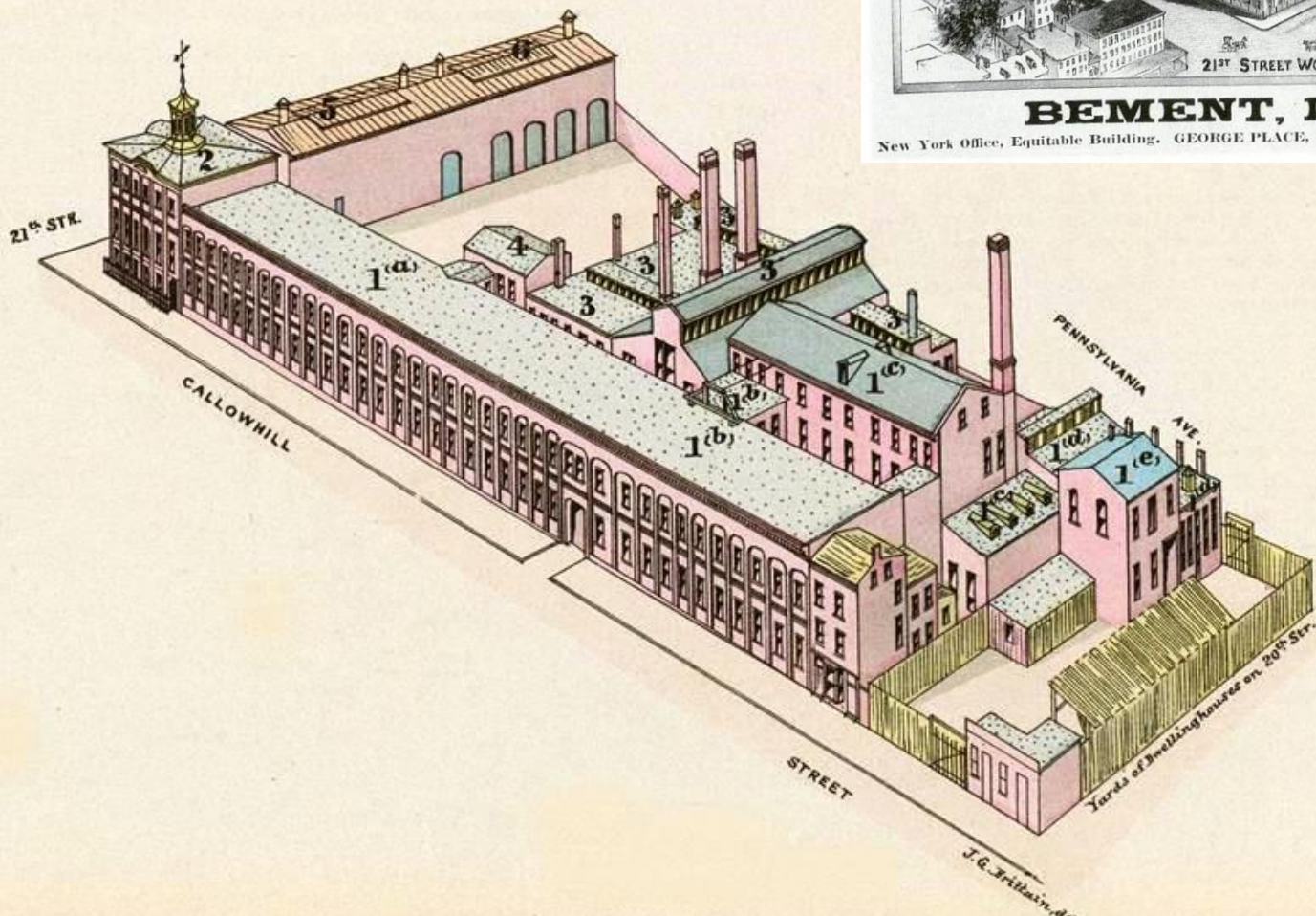
"Sunny Jim" McNichol house (222) ↑

Bement Miles and Co. machine tools

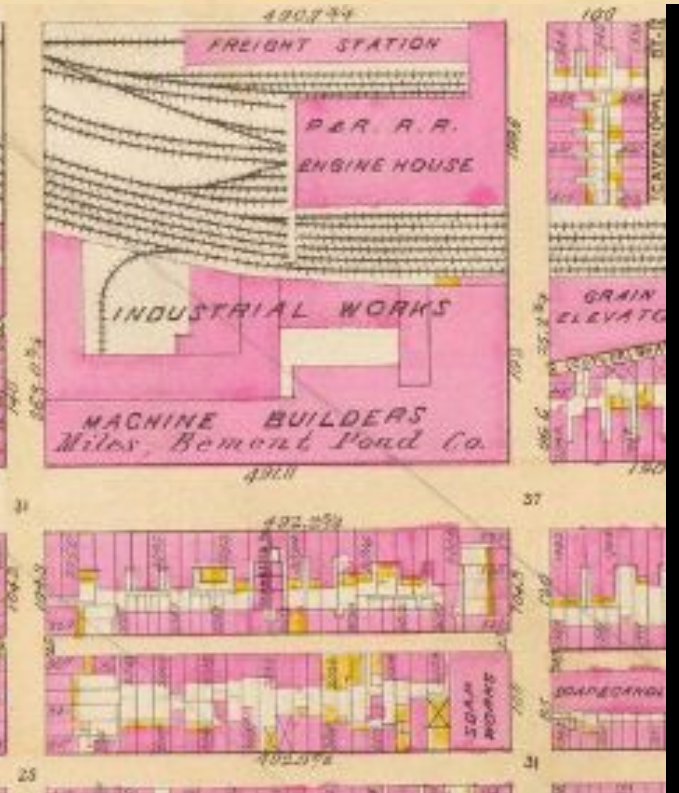
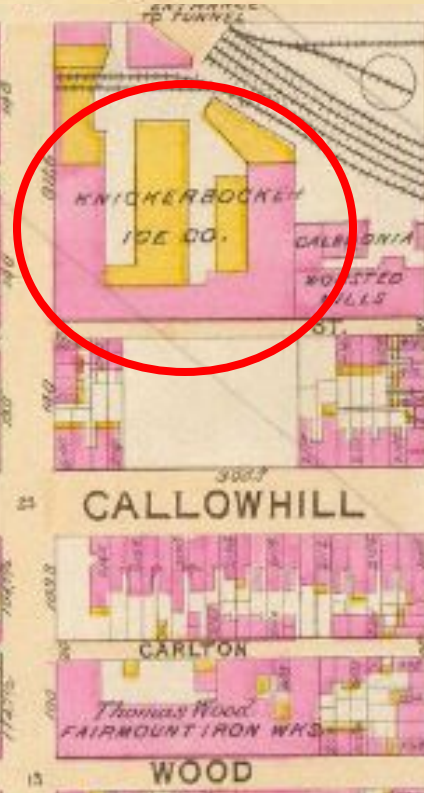
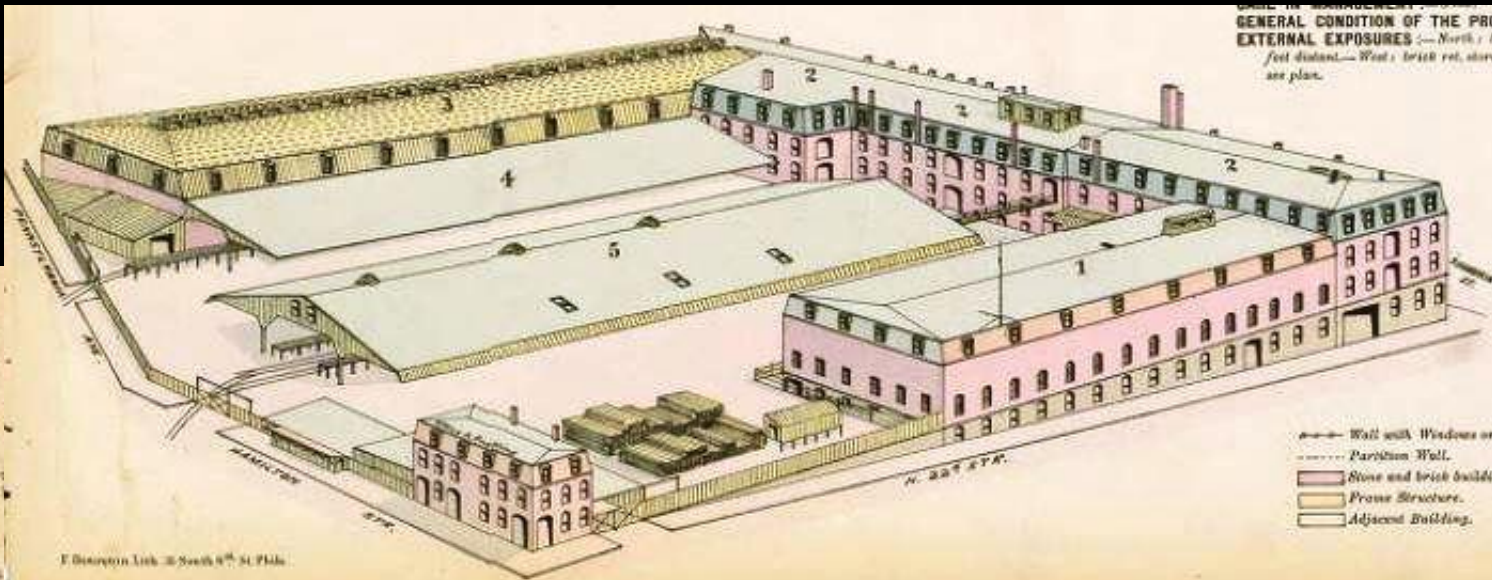


Bement Miles and Co. machine tools

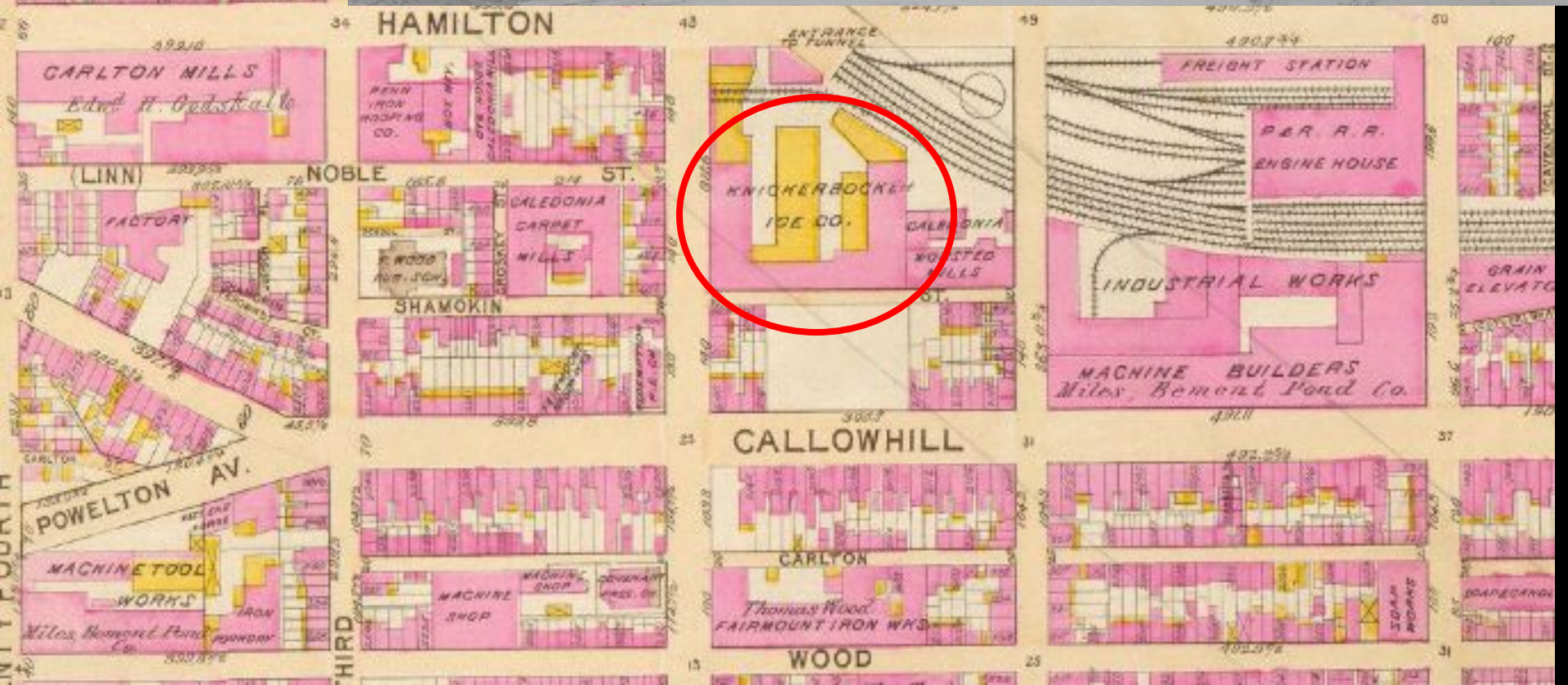
in 1875



Knickerbocker Ice Company in 1881



Knickerbocker Ice Company





1913



1911





early 1919

Free Library

Julian Abele
1881-1950



THE ARCHITECTURAL SOCIETY (1902)



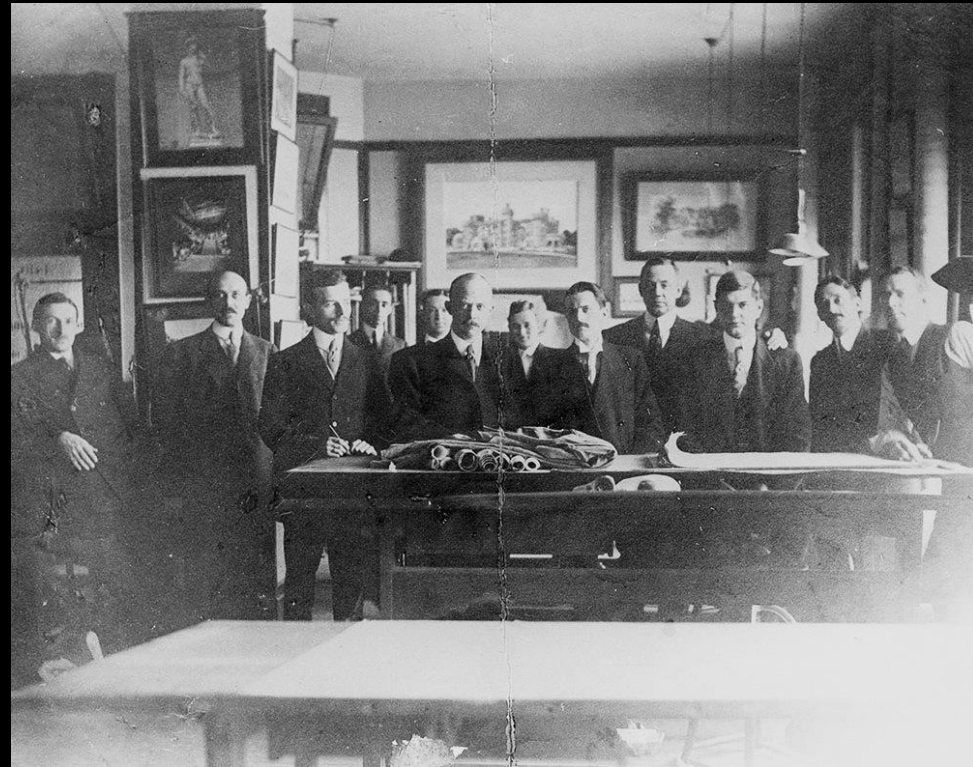
Horace Trumbauer
1868-1938

ca. 1930



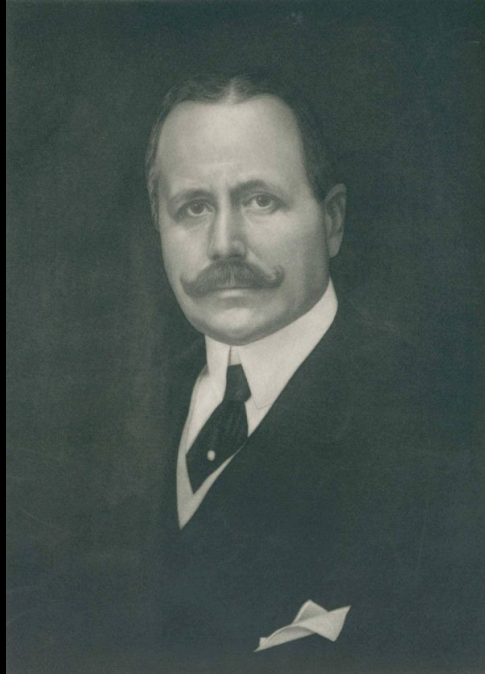
Julian Abele

ca. 1907





P. A. B. Widener



George Widener



Harry Elkins Widener

April 10, 1911



Horace Trumbauer

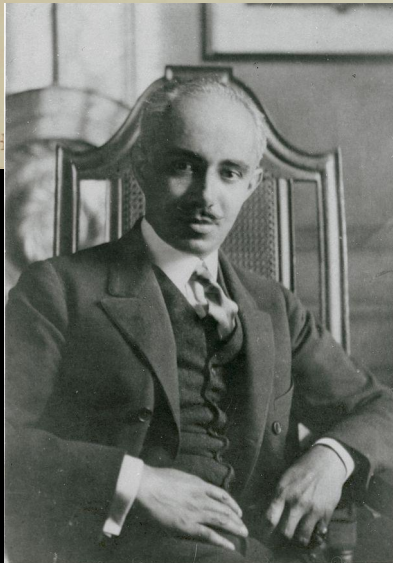
John Thomson





· THE · FREE · PUBLIC · LIBRARY · OF · PHILADELPHIA ·
· MAIN BUILDING · FRONT ELEVATION ·

SCALE: ONE INCH EQUALS EIGHT FEET.



Julian Abele

October 5, 1911

April 2, 1912

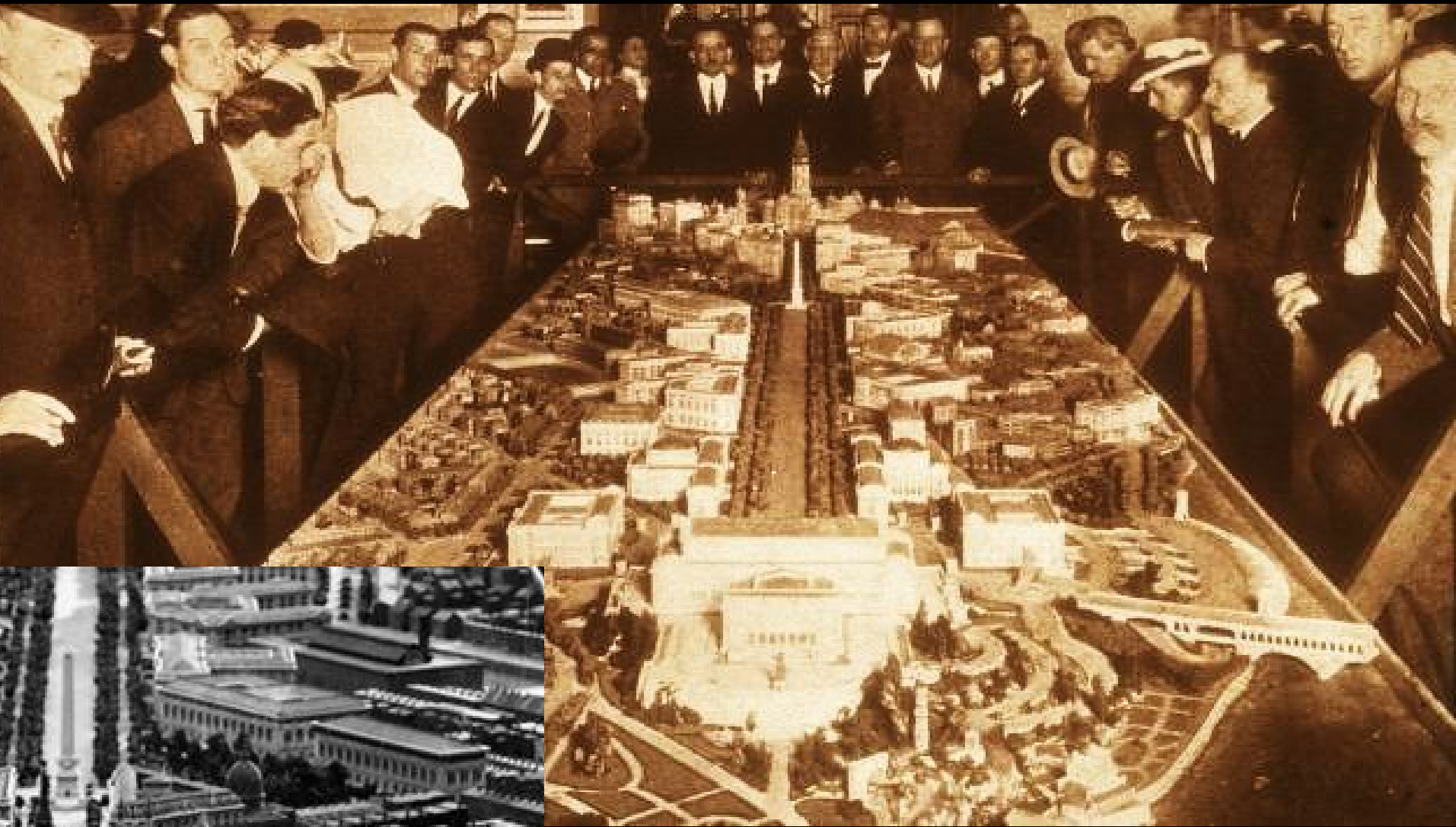
Horace Trumbauer

Free Library

Philadelphia

1911-27

May 1911





**Ange-Jacques Gabriel
Place Louis XV /
Place de la Concorde
Paris 1755-1775**



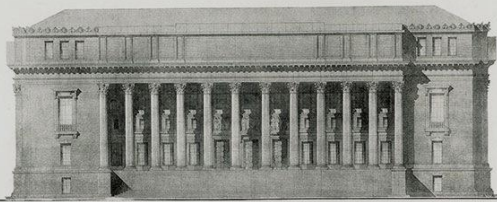


**Horace Trumbauer
Free Library
Philadelphia
1911-27**

1912



RMS Titanic
leaving Southampton
April 10, 1912



FRONT ELEVATION

THE HARRY ELKINS WIDENER MEMORIAL LIBRARY FOR HARVARD UNIVERSITY
CAMBRIDGE MASSACHUSETTS

HORACE TRUMBOWER, ARCHITECT

PHILADELPHIA

PENNSA.



Horace Trumbauer

**with George D. Widener, Jr,
and Eleanor Elkins Widener,
at Harvard, ca. 1915**



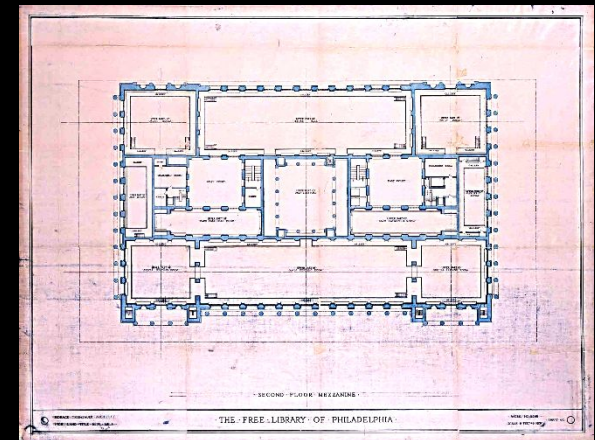
Widener Library, Harvard, 1913-15



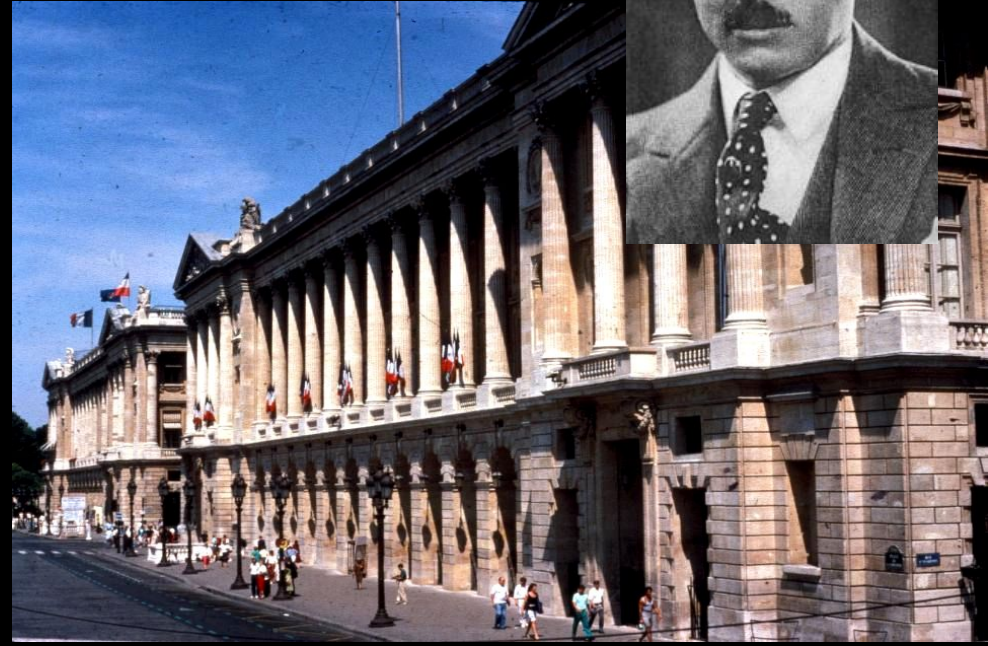
Horace Trumbauer
Free Library
Philadelphia
1911-27

1916

Julian Abele
November 23, 1916



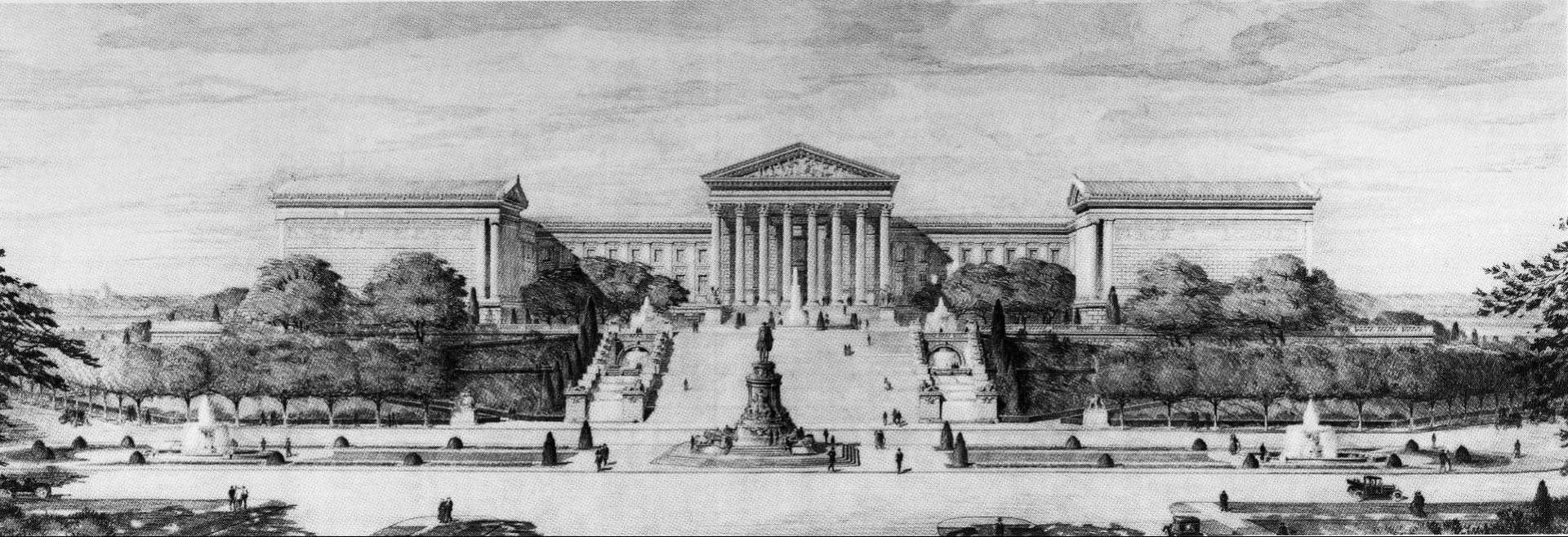
Paul Cret



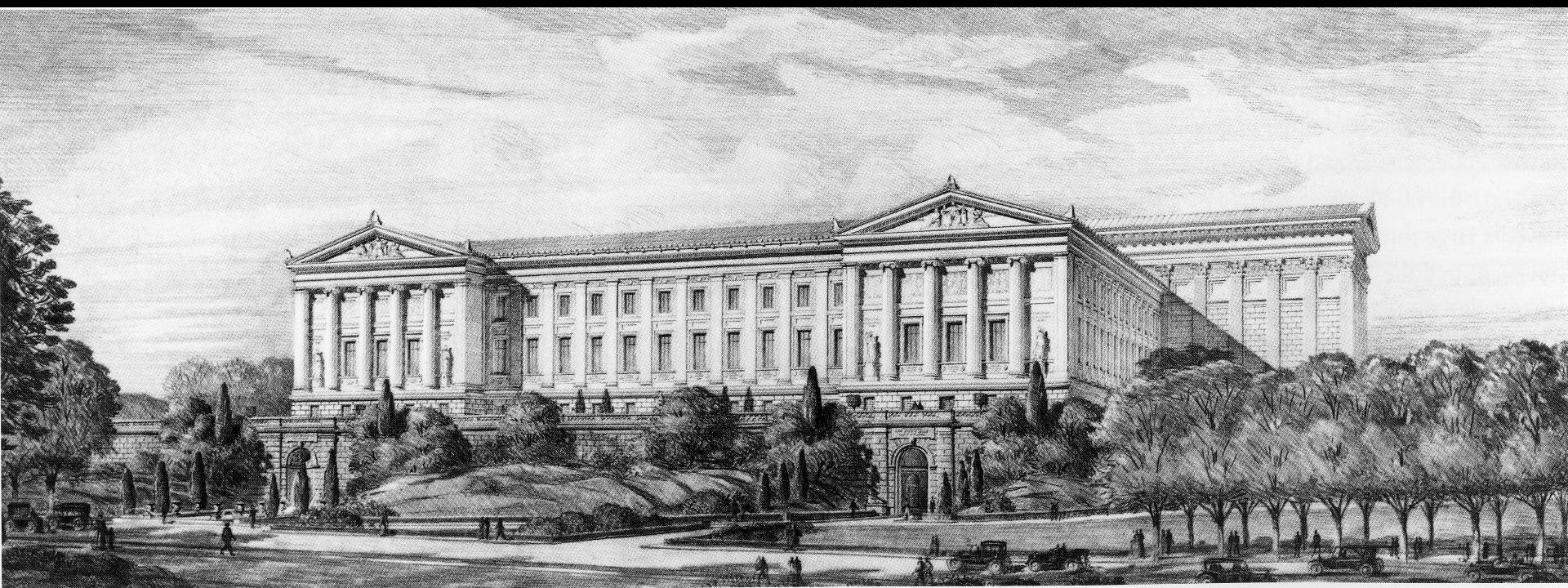
Horace Trumbauer
Free Library
Philadelphia
1911-27

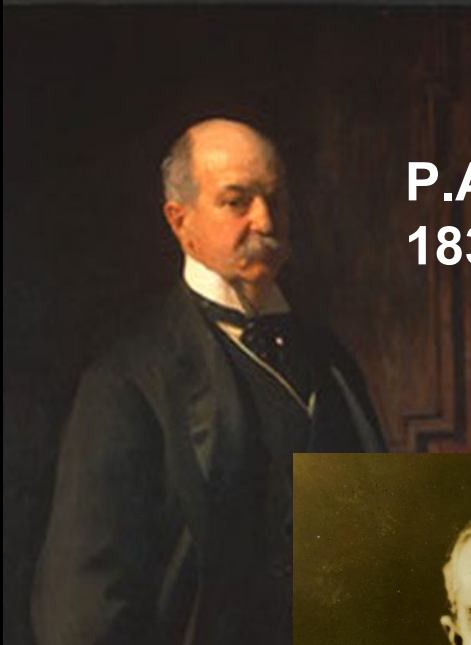
Ange-Jacques Gabriel
Place de la Concorde
Paris
1755-1775

PMA story



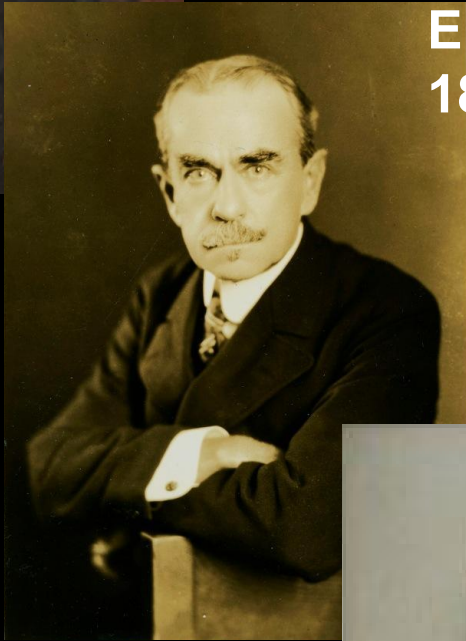
Julian Abele 1919





P.A.B. Widener
1834-1915

Horace Trumbauer
1868-1938



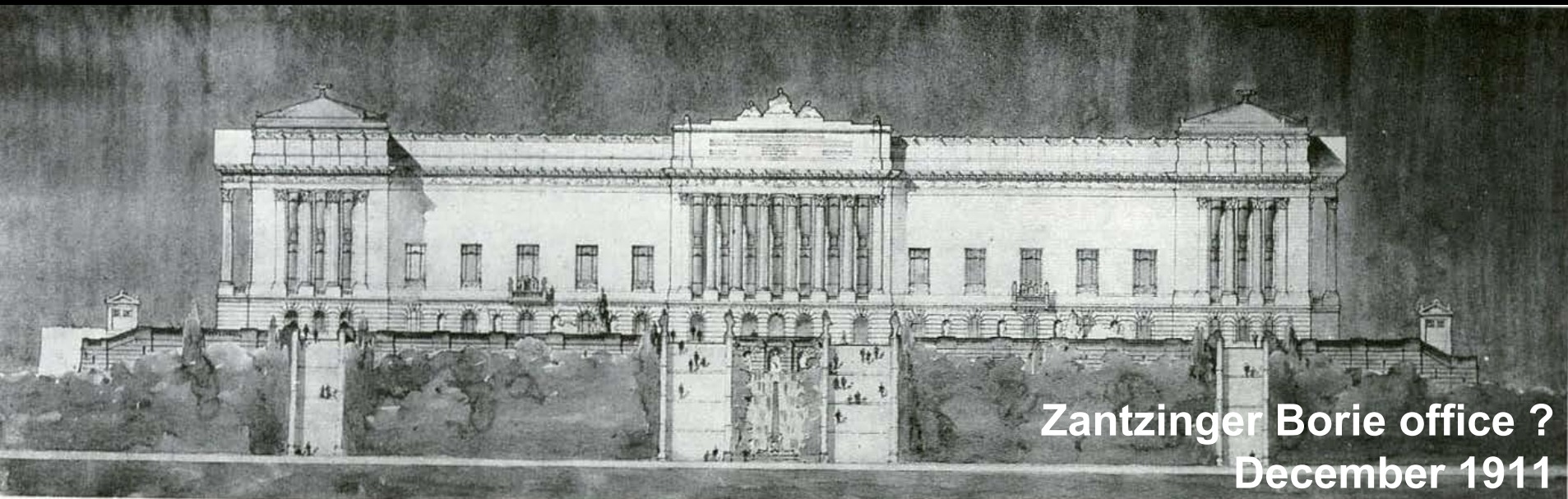
Eli Kirk Price
1860-1933

Clarence Zantzinger
1872-1954



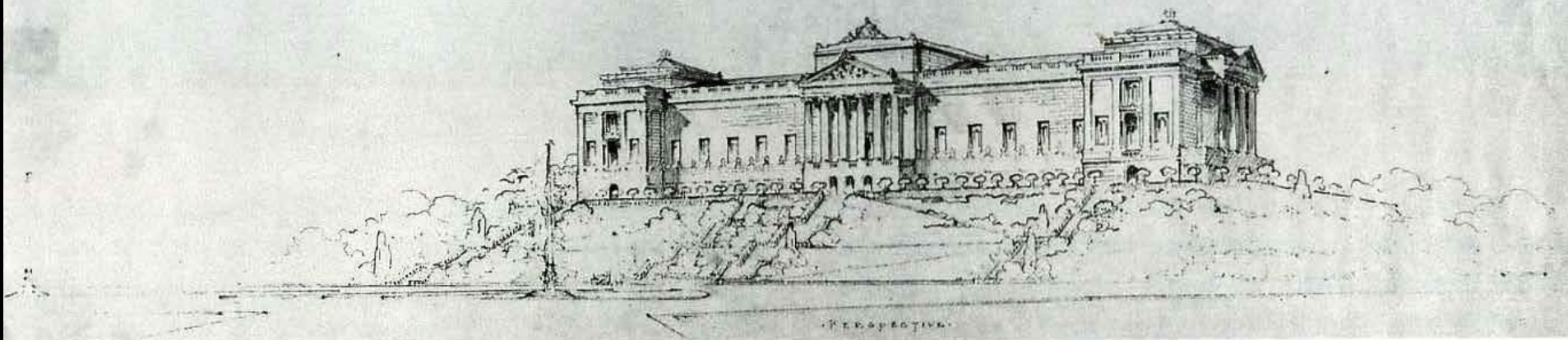
Edward T. Stotesbury
1849-1938

June 29, 1911



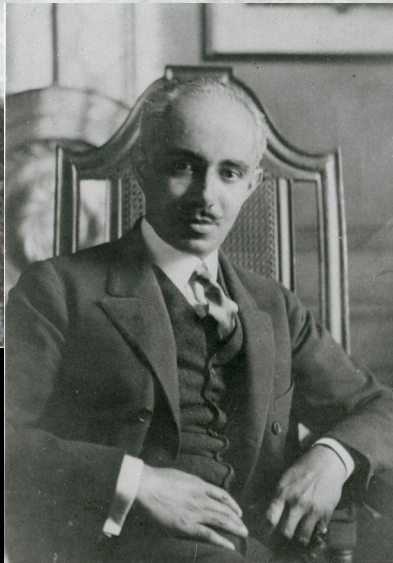
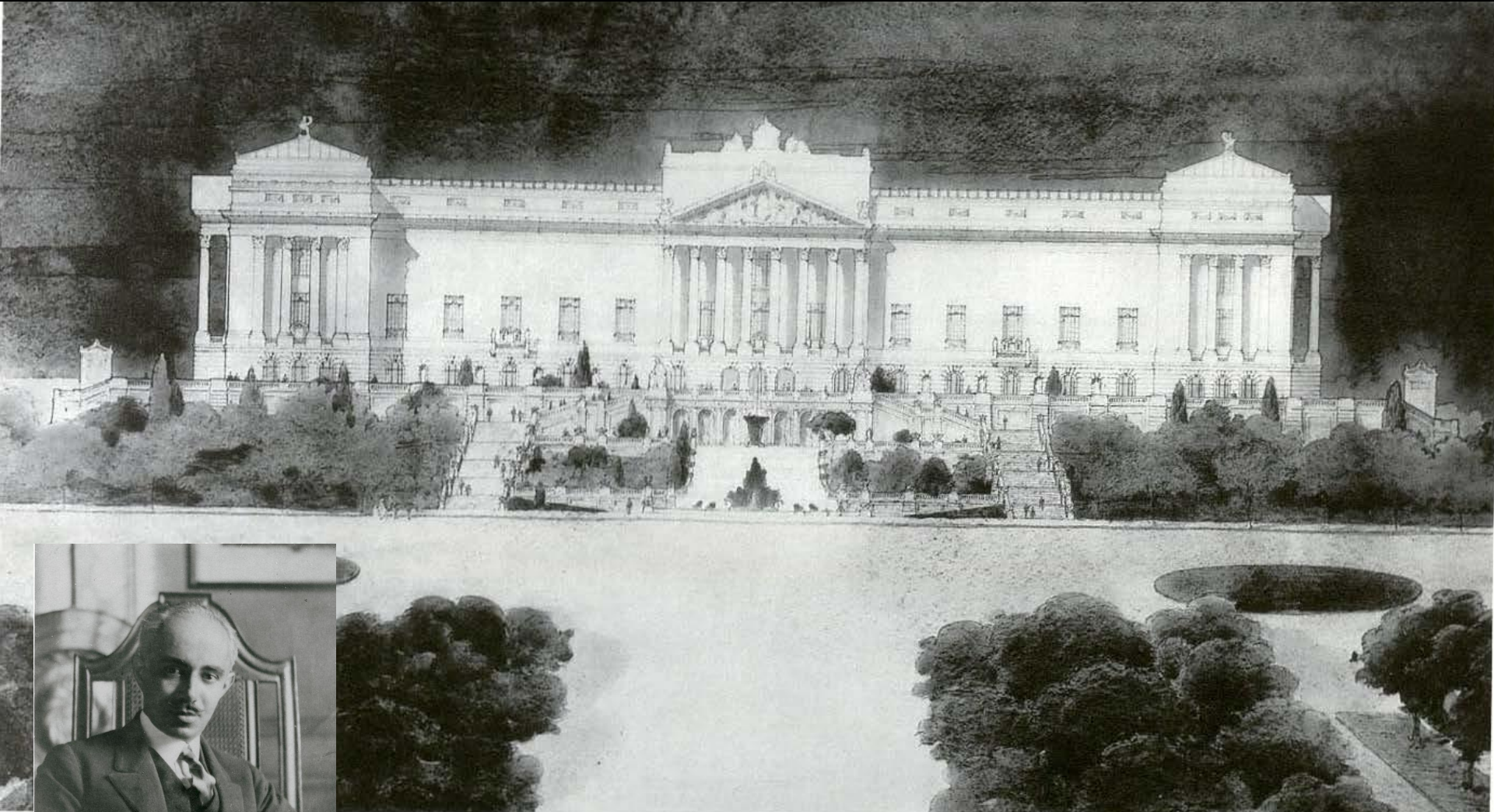
Zantzinger Borie office ?
December 1911

Trumbauer office?
December 26, 1911



TRUMBauer

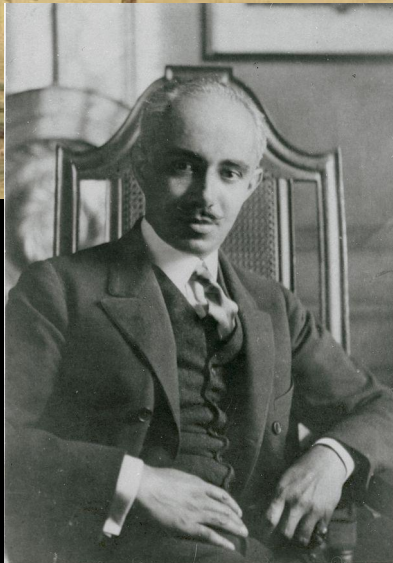
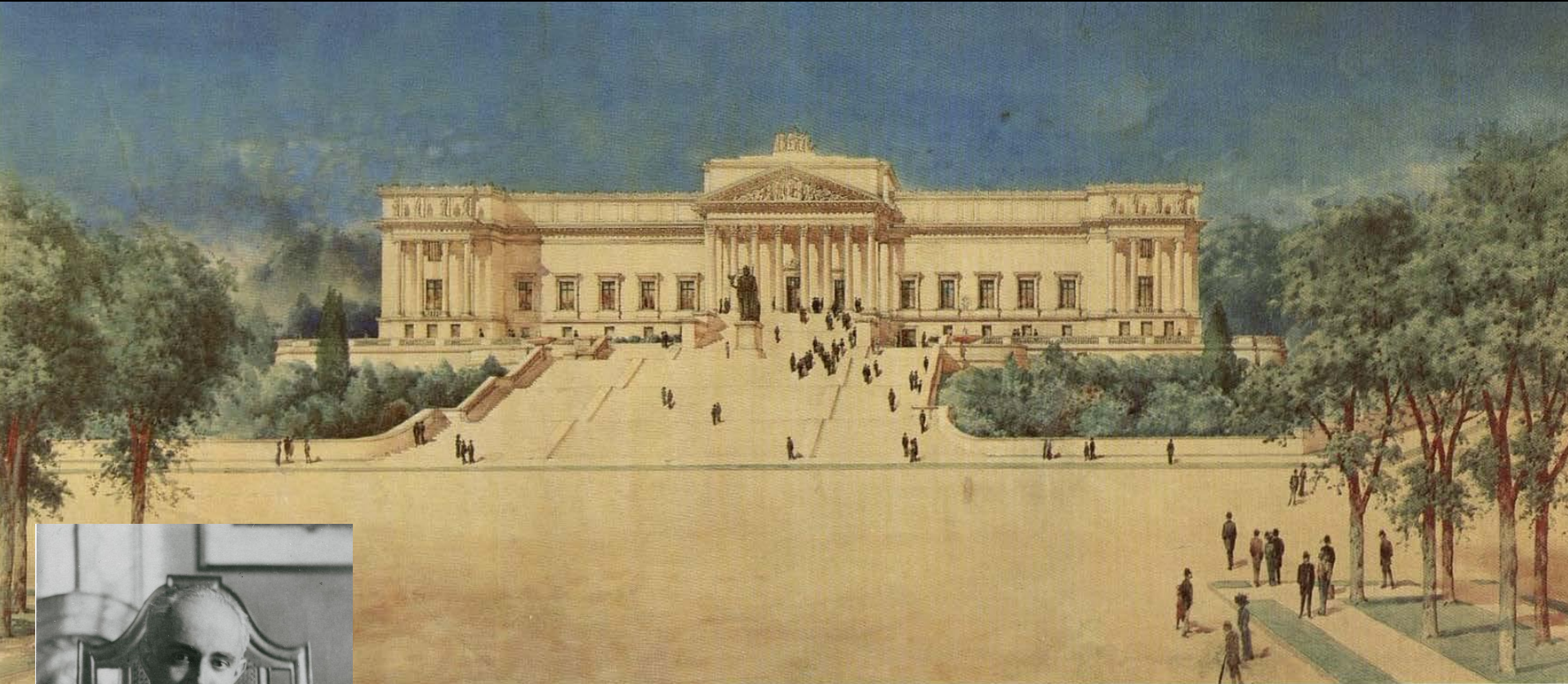
Trumbauer office spring 1912



Julian Abele

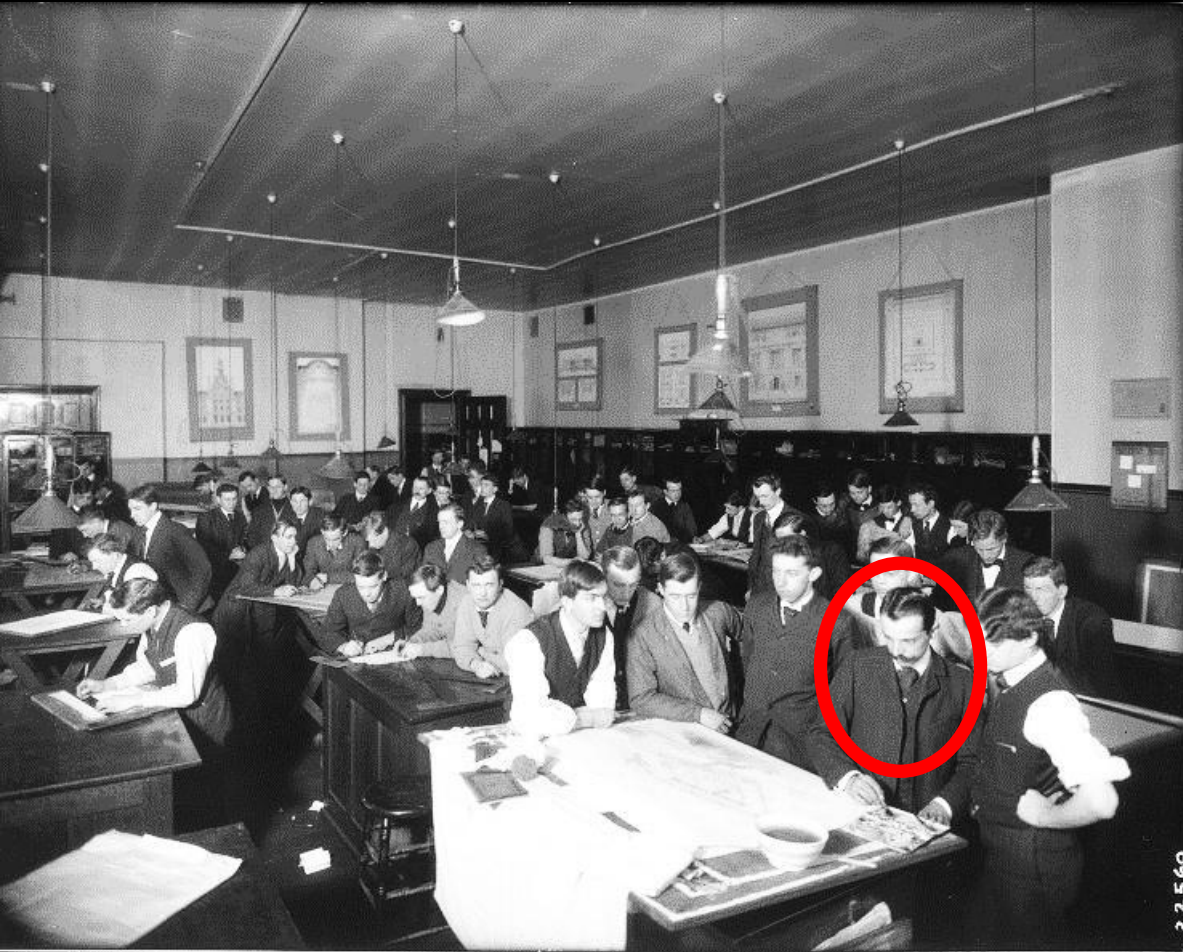
Trumbauer office

December 1912

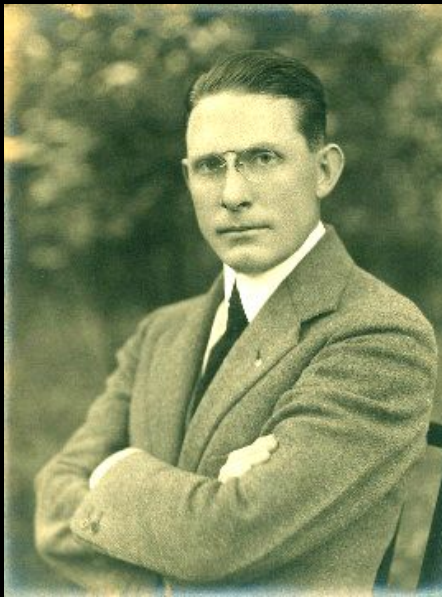


Julian Abele

in studio at Penn 1907



**Paul Philippe Cret
(1876-1945)**



**Howell Lewis Shay
(1884-1975)**



**William Pope Barney
(1890-1970)**

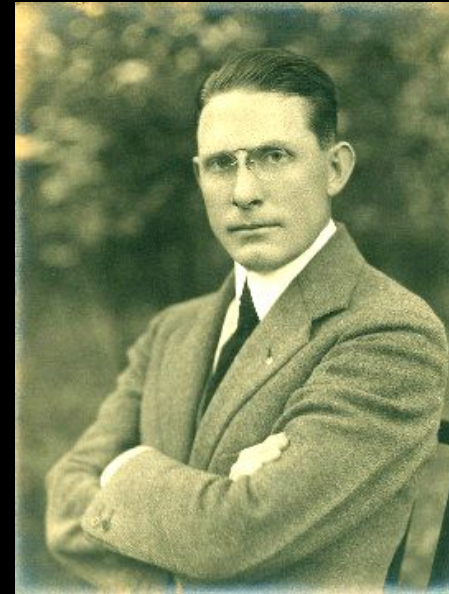


**Paul Philippe Cret
(1876-1945)**



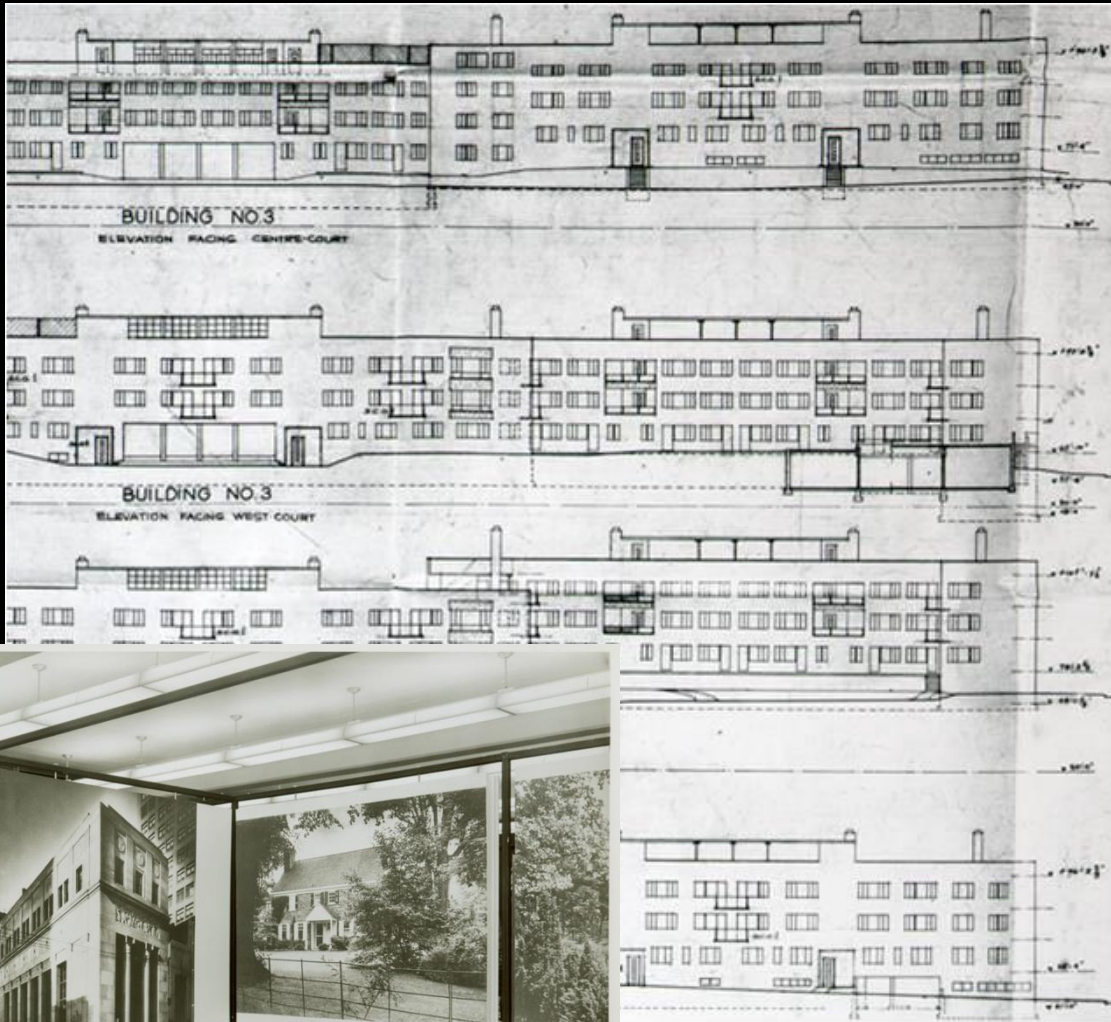
**Ritter & Shay
Market Street
National Bank
1929**

Howell Lewis Shay



William Pope Barney

Carl Mackley Houses 1933-35



Notes: See Plans, Section of Levelled Box Concrete
See Cover Drawing March 17, 1934 P.A.C.

8

JUNIATA HOUSING CORPORATION
CAYUGA, M & BRISTOL STREETS
KENSINGTON - PHILADELPHIA, PA.

ELEVATIONS (EAST & WEST)
3/8" = 1'-0"

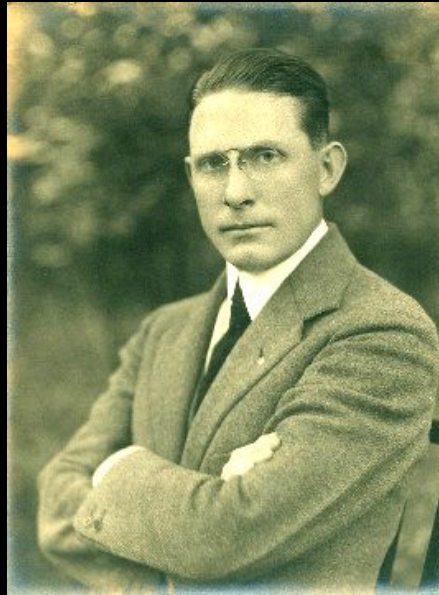
MASTERS AND STONOR
3021 CHANCELLOR STREET, PHILADELPHIA
BETHLEHEM 5845
W. POPE BARNEY, A. I. A.
REGISTERED ARCHITECT
1805 WALNUT STREET, PHILADELPHIA
RITTENHOUSE 3947

DATE OCT. 3, 1933 CHECKED
DRAWN A.M. W. APPROVED



Georgia Tech 1956

Howell Lewis Shay
(1884-1975)



Horace Trumbauer
(1868-1938)



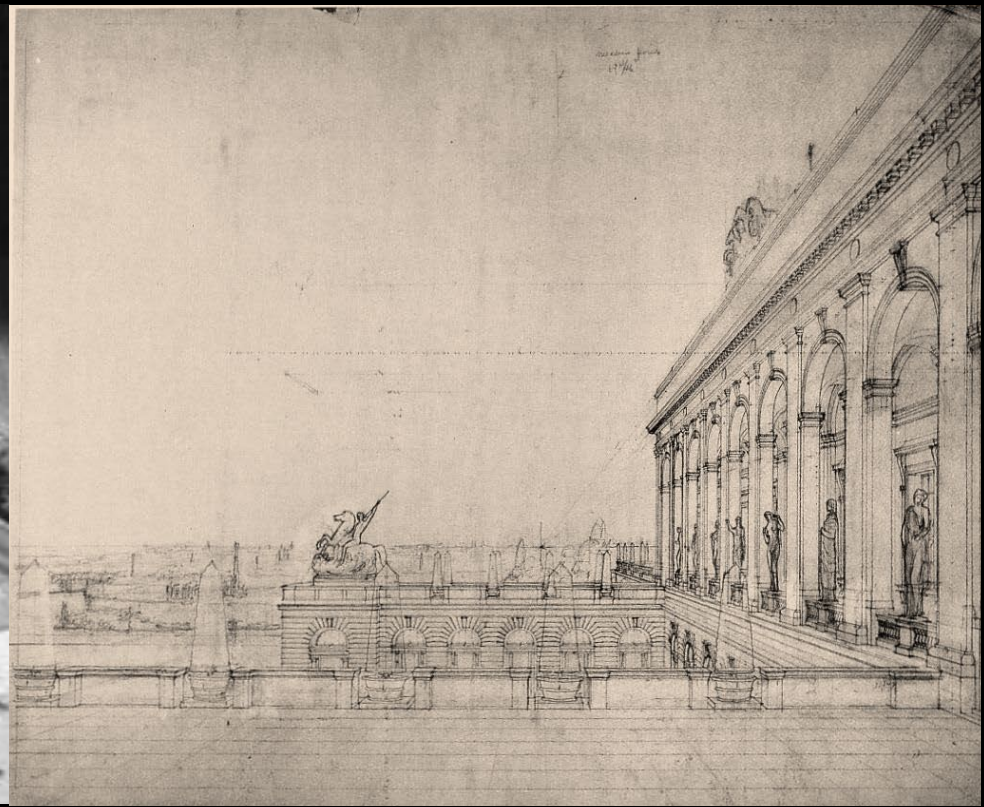
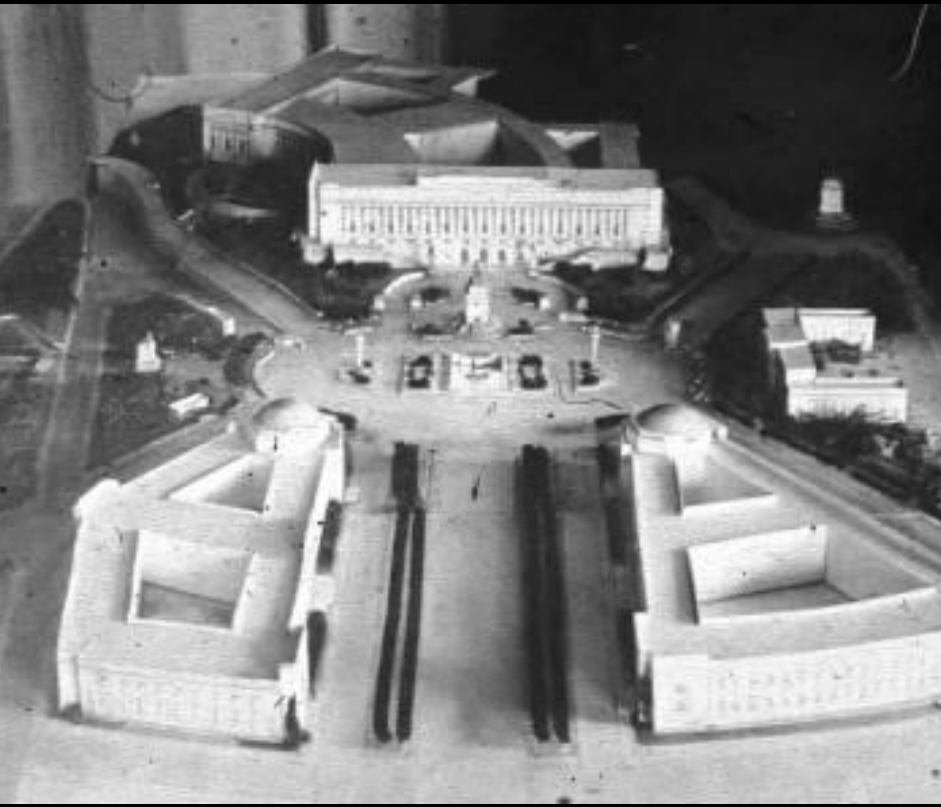
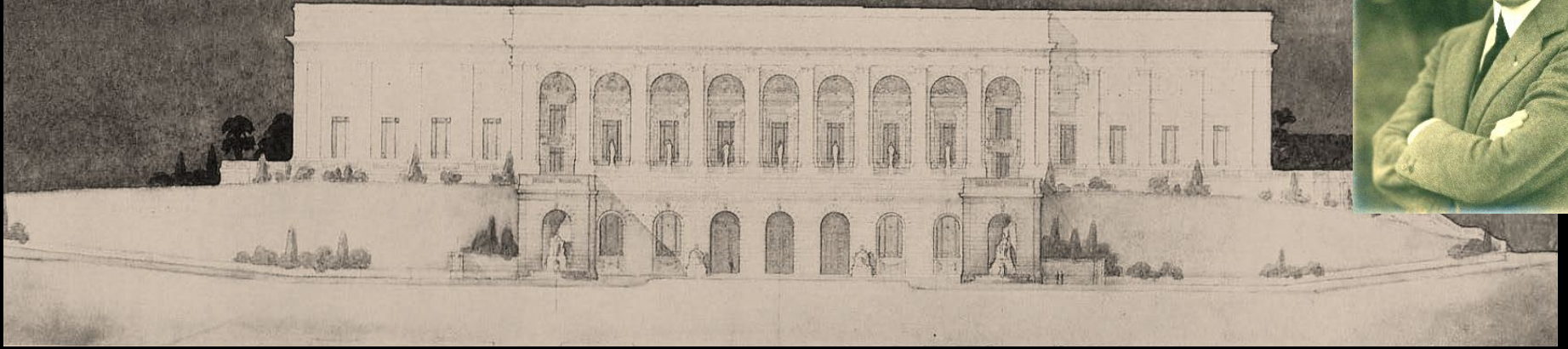
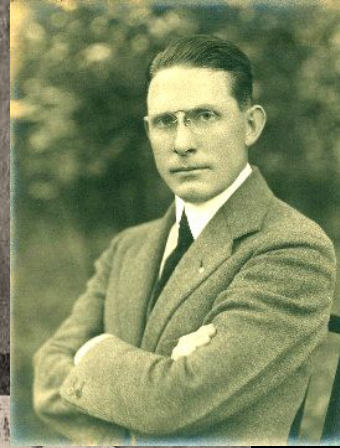
William Pope Barney
(1890-1970)

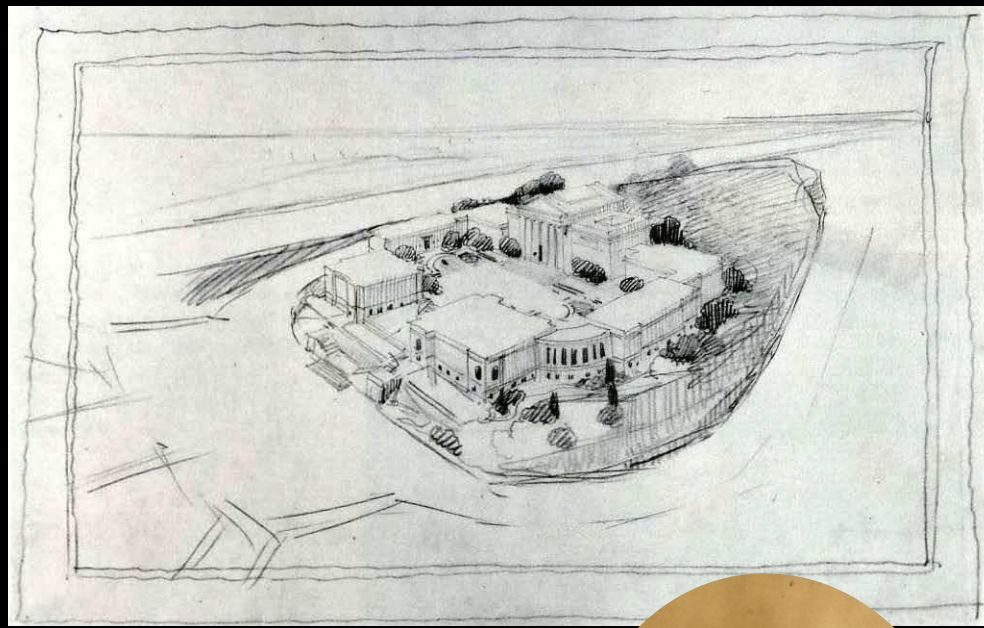
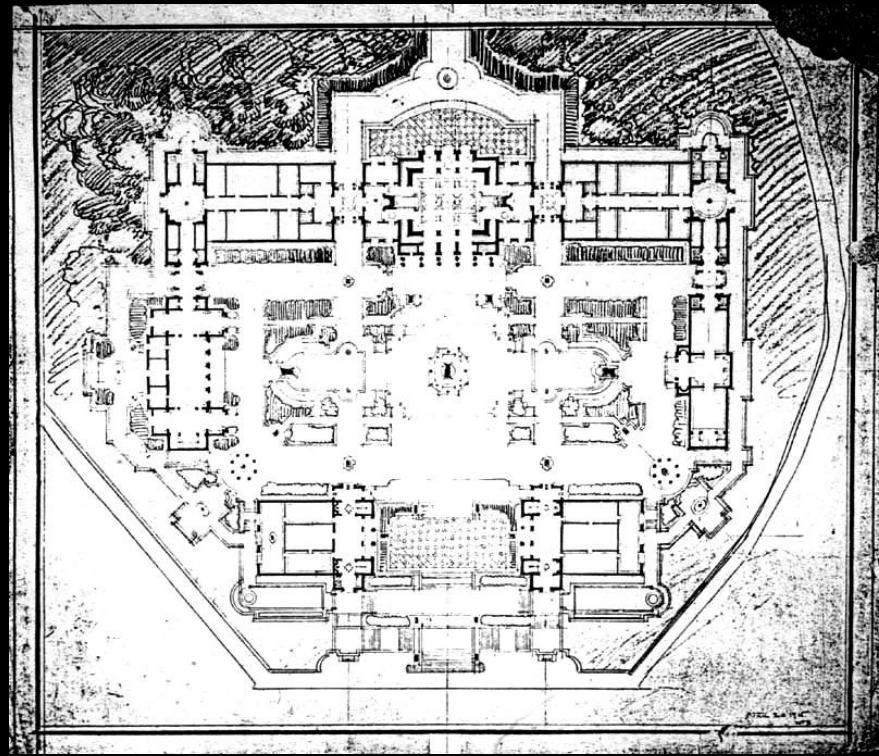


Clarence Zantzinger
(1872-1954)

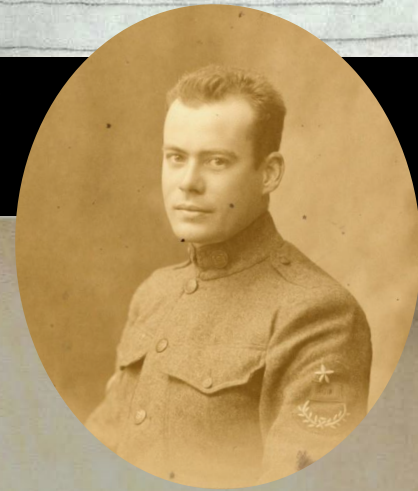


Howell Lewis Shay
fall 1914

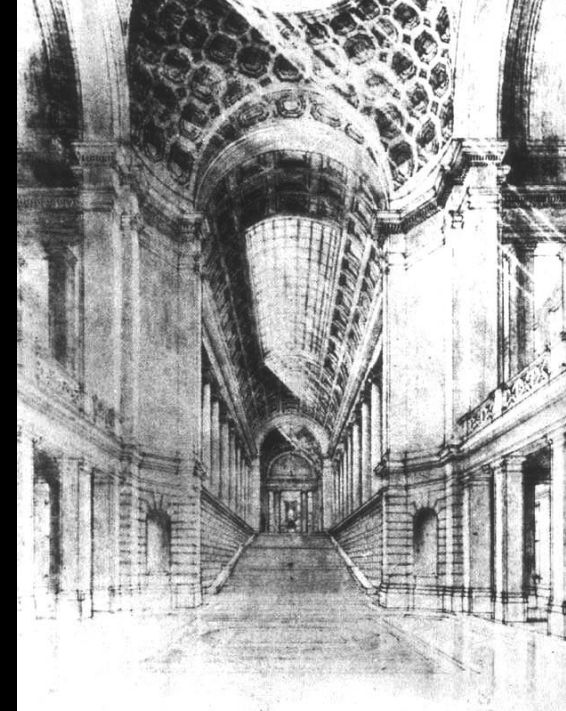




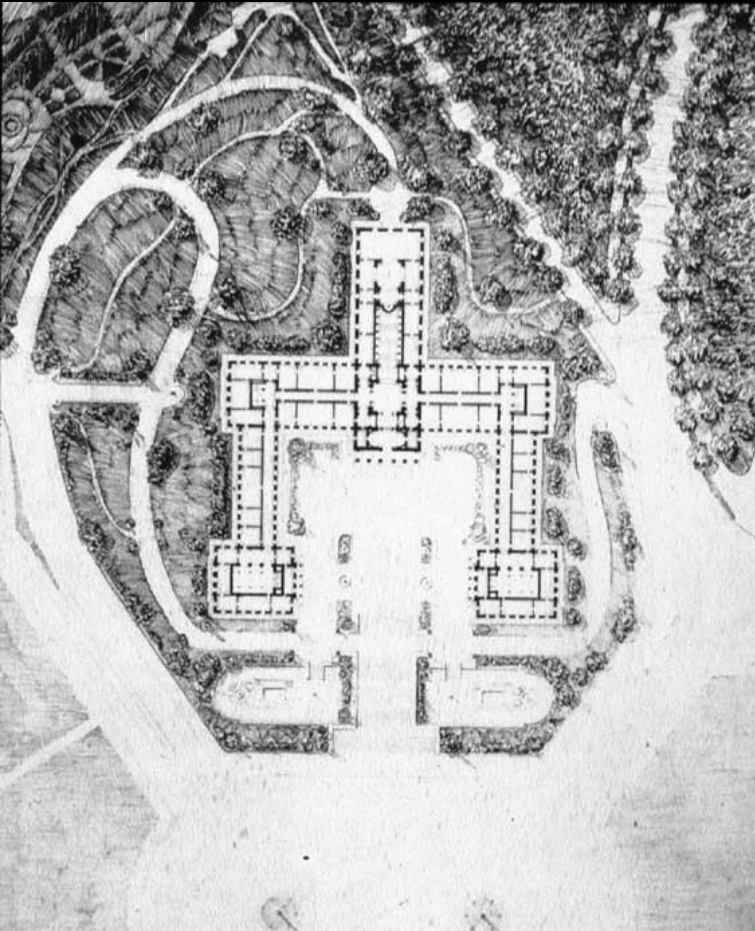
William Pope Barney
spring 1915



June 1915



Howell Lewis Shay

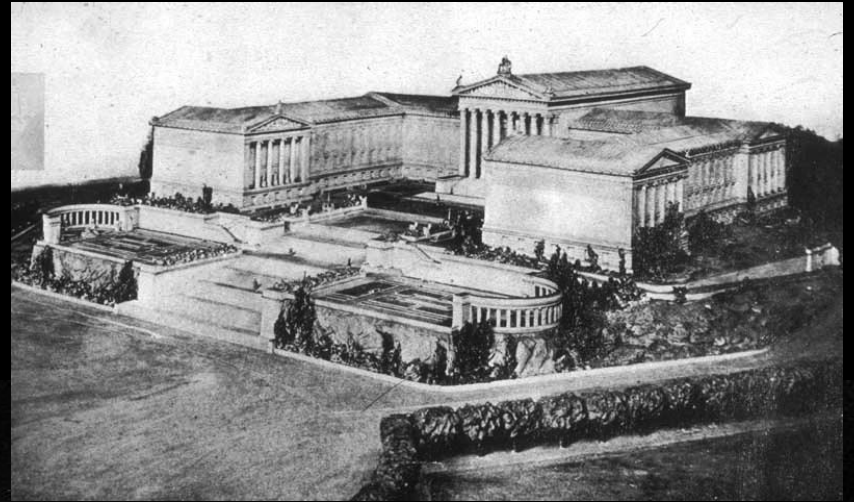


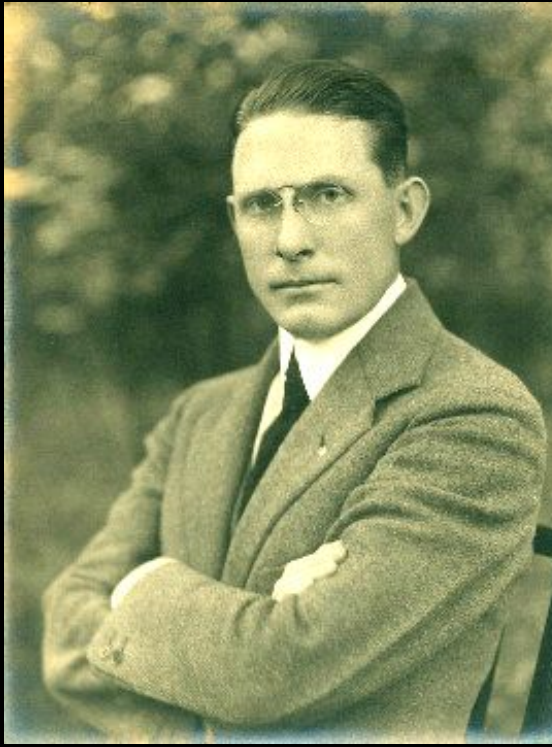
Fall 1915





**Model displayed in
City Hall courtyard
December 1915-February 1916**





Howell Lewis Shay



William Pope Barney



Julian Abele

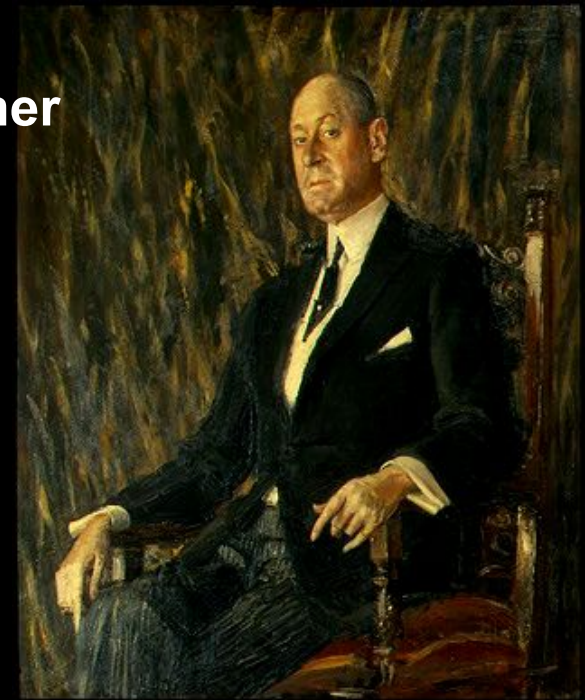
Fiske Kimball
1888-1955



Wedge of Green

Joseph E. Widener

Augustus John 1921

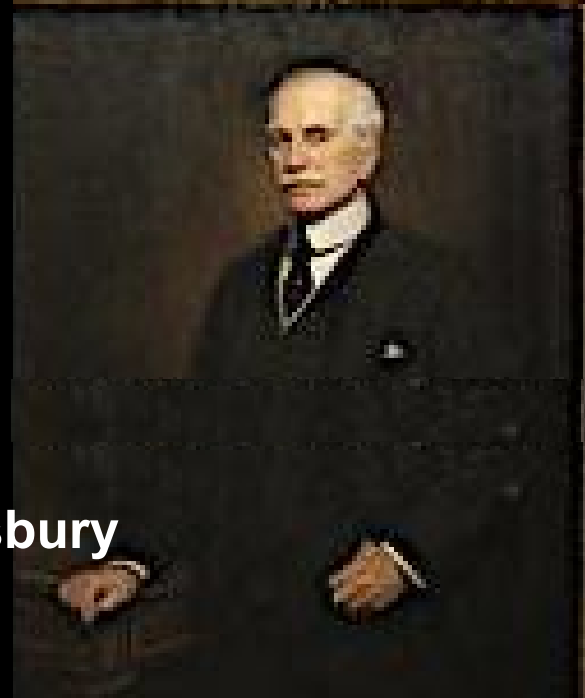


March 30, 1917



Edward T. Stotesbury

RP Partington 1918

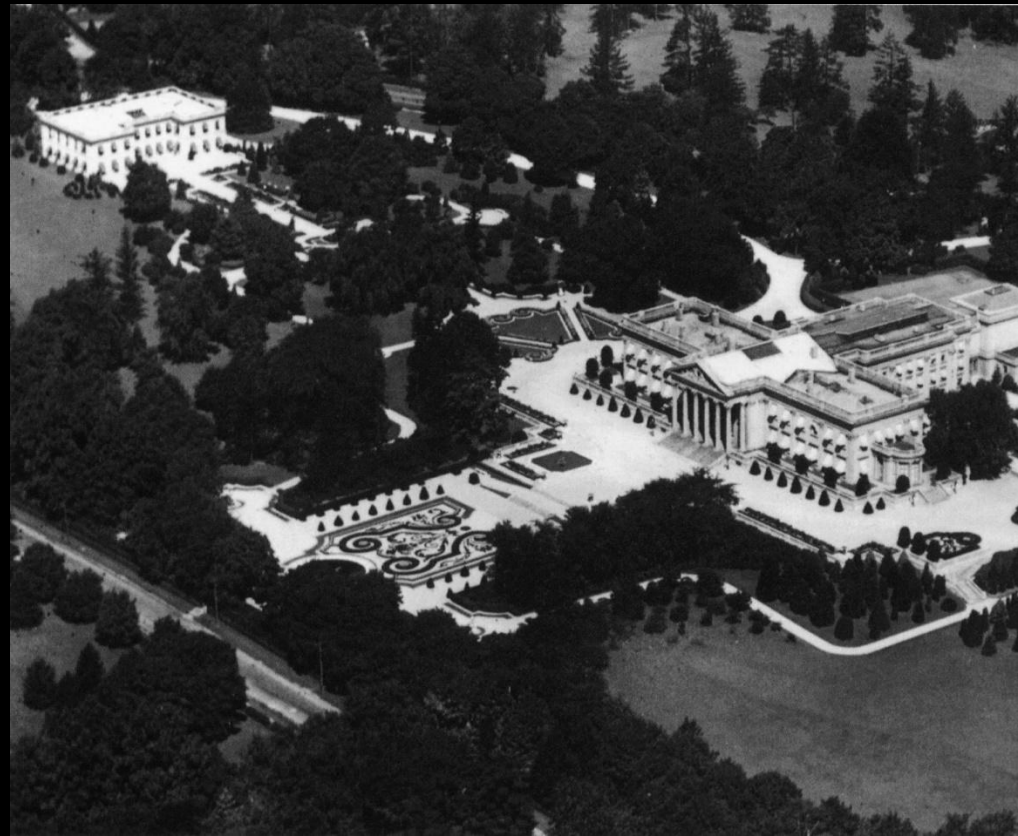




**Whitemarsh Hall
Springfield, PA
1916-21**



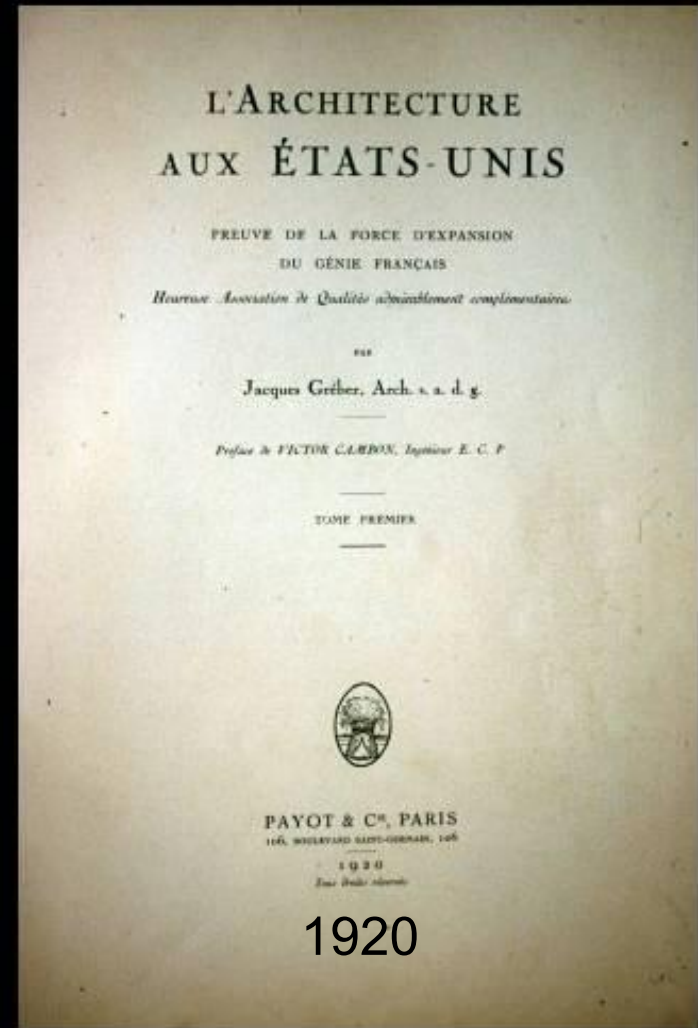
Jacques Gréber

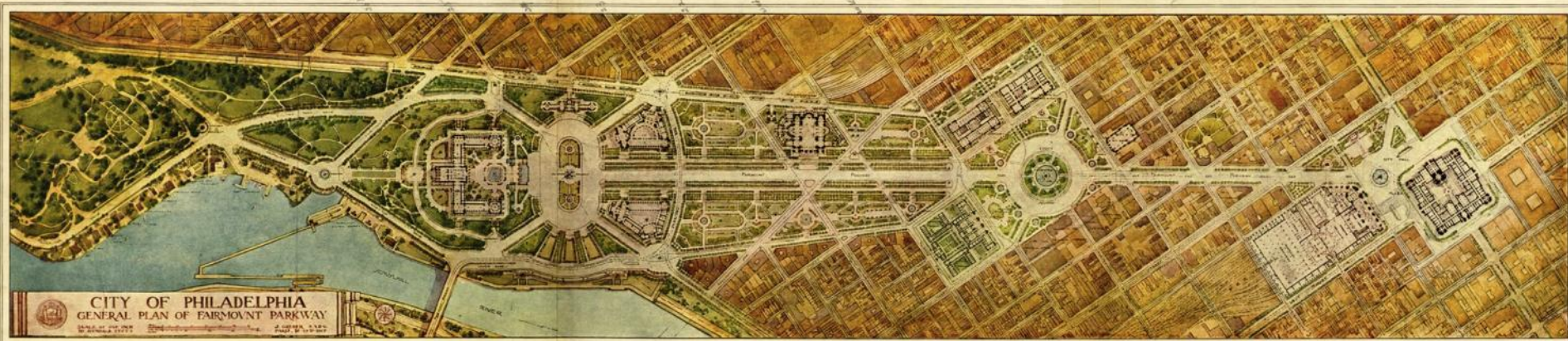


**Lynnewood Hall
Elkins Park, PA
gardens 1913-15**



Jacques Gréber



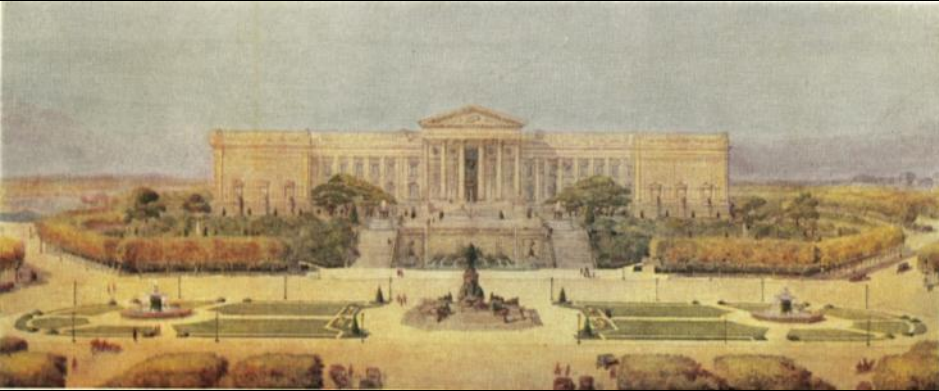


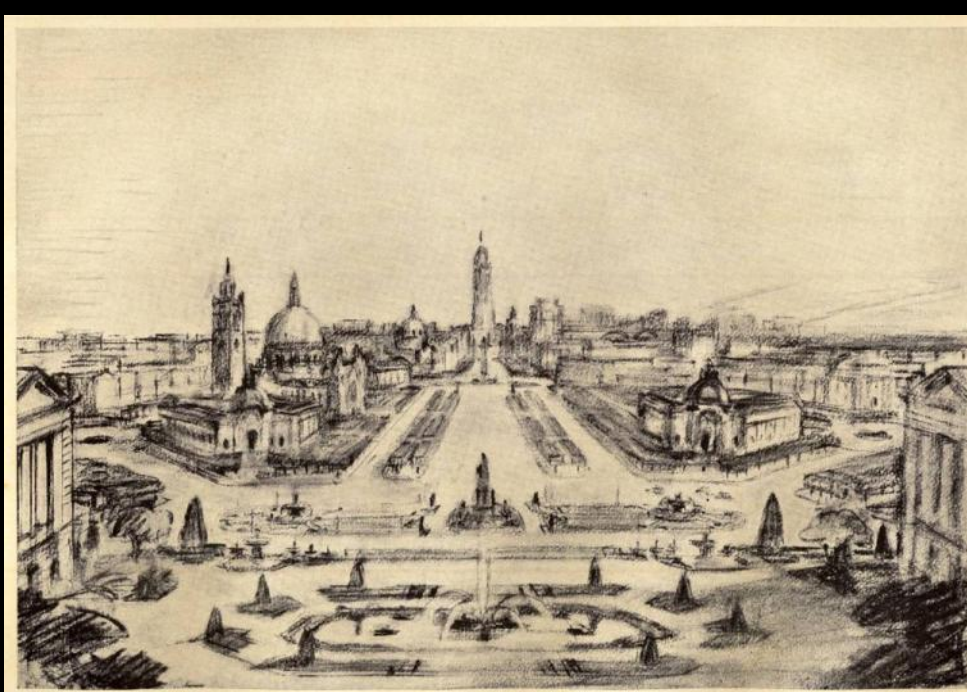
Gréber
Fairmount Parkway
3 September 1917

Jacques Gréber

Gréber

20 October 1917

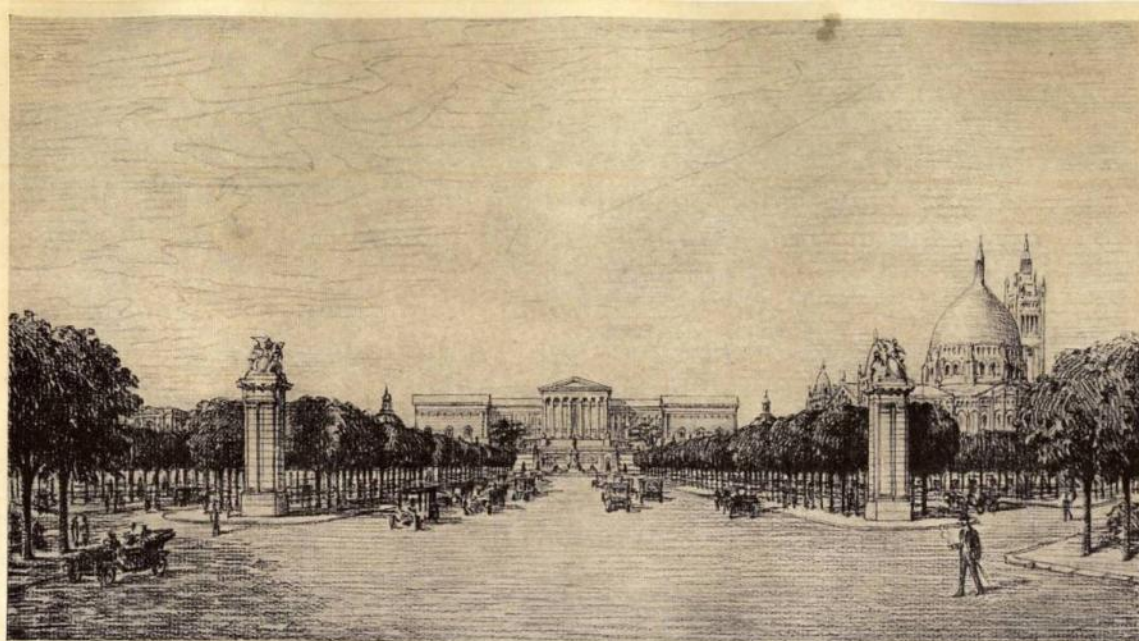




Fall 1917

Jacques Gréber

January 1918



*The Parkway,
View from Logan Square, towards the Museum*

**Clover Room
Bellevue Stratford Hotel
in 1905**

*E. W. Kelley, Publisher
Studio and Home Office, Chicago, Ill.*



*Still owned by E. W. Kelley
Chicago, Dallas, Fort. Augusta, Ga.*

The Clover Club Banquet Room By Electric Light, Arranged for Annual Feast in America's Finest Hotel, the Bellevue Stratford, Phila., U.S.A. —



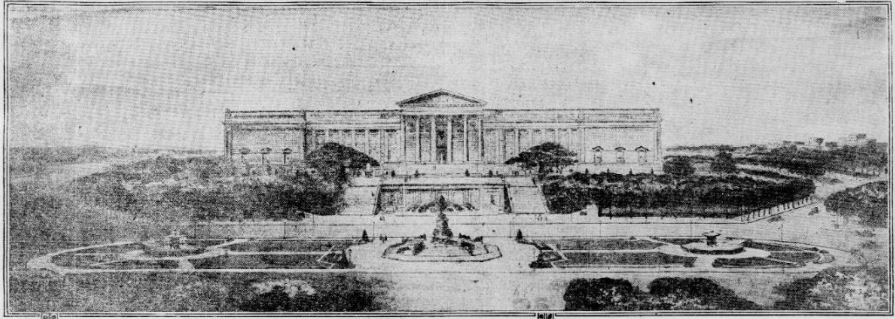
**Annual Meeting
Fairmount Park Art Association
January 30, 1918**

Joseph E. Widener

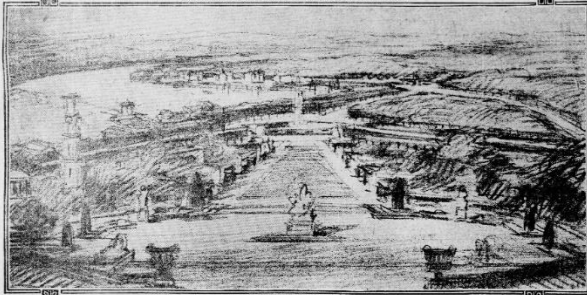
Jacques Gréber



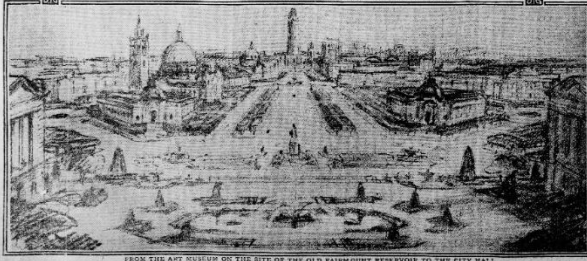
Vision of Eminent French Architect Links Fairmount Park to City Hall



ZACADE OF THE ART GALLERY TOWARD FAIRMOUNT PLAZA



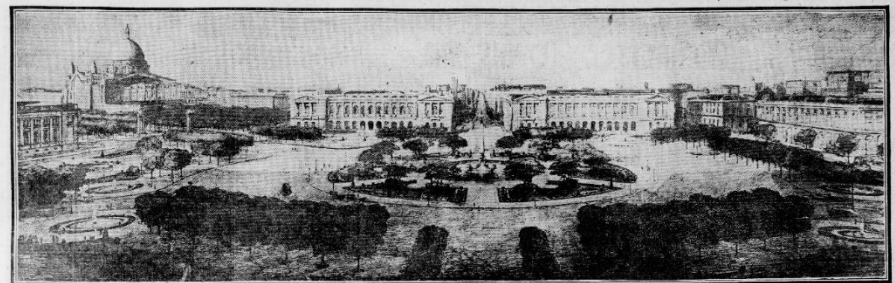
LOOKING TOWARD THE SCHUYLKILL FROM THE REAR OF THE ART MUSEUM



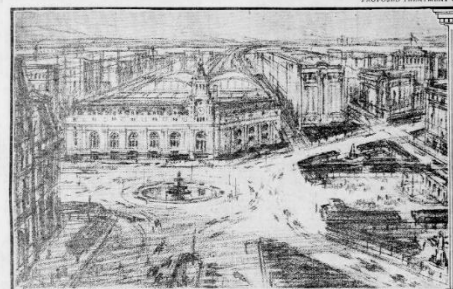
FROM THE ART MUSEUM ON THE SITE OF THE OLD FAIRMOUNT RAILROAD TO THE CITY HALL

NEW plans, exhibiting the extraordinary imagination of the architect, link Fairmount Park with the City Hall, and will be the subject of the next issue of the Inquirer. The plans are the work of an eminent French architect, who has been invited by the City of Philadelphia to study the problem of linking the park with the city. The architect's plan is to create a grand boulevard, which will connect the park with the city, and will be the subject of the next issue of the Inquirer.

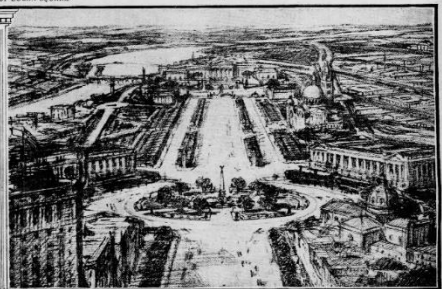
The plan, in many respects, suggests the famous Elysées in Paris, which are not only the finest of the world, but also the most beautiful. The architect's plan is to create a grand boulevard, which will connect the park with the city, and will be the subject of the next issue of the Inquirer. The plan is to create a grand boulevard, which will connect the park with the city, and will be the subject of the next issue of the Inquirer.



PROPOSED TREATMENT OF LOGAN SQUARE



SHOWING THE TREATMENT OF THE SPACE BETWEEN THE CITY HALL AND THE PENNSYLVANIA RAILROAD STATION. THE STATION IS, HEREIN, SHOWN IN FIFTH-STOREY ELEVATION



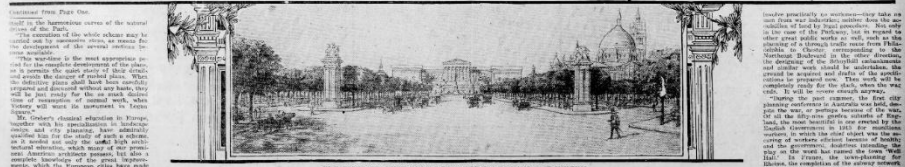
LOOKING TOWARD THE ART GALLERY FROM LOGAN SQUARE



FAÇADE OF THE ART GALLERY TOWARD THE RIVER



FAÇADE OF THE ART GALLERY TOWARD FAIRMOUNT PARK



THE PARKWAY VIEW FROM LOGAN SQUARE TOWARD THE MUSEUM

The parkway will be the subject of the next issue of the Inquirer. The plan is to create a grand boulevard, which will connect the park with the city, and will be the subject of the next issue of the Inquirer.

Inquirer, Feature Section, February 10, 1918

PHILADELPHIA THE MAGNIFICENT; THE CITY BEAUTIFUL OF THE FUTURE
 What the Parkway and the General Plan of the City Will be as Developed by Jacques Greber, of Paris, at the Instance of Mr. Joseph E. Widener



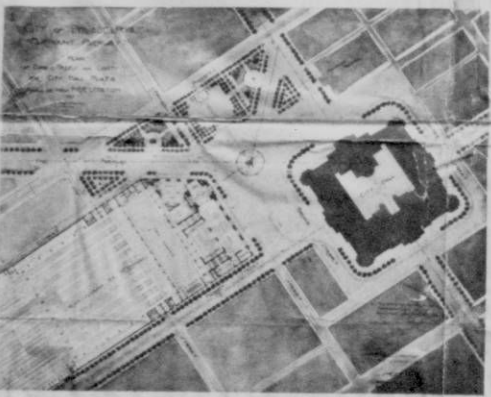
Western View, North of the Parkway, Looking Northward from University and Arch Streets, Showing the Golden Plan and the Proposed Parkway in the Center of the City.



General Plan of Upper Section with University and Arch Streets, Showing the Golden Plan and the Proposed Parkway in the Center of the City.



Upper Section, Looking South from the University and Arch Streets, Showing the Golden Plan and the Proposed Parkway in the Center of the City.



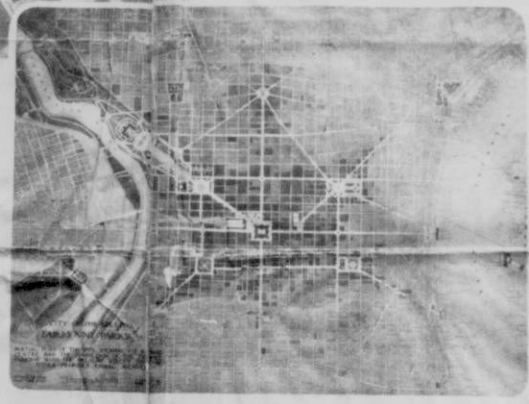
Close-up Plan of the Parkway Showing the University and Arch Streets and its Relation to the City Plan and the New Parkway System.



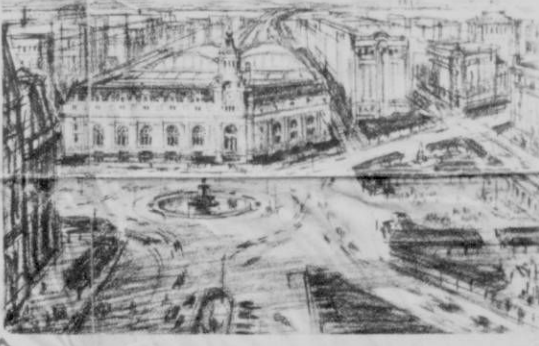
Vertical Plan of the Parkway Showing the University and Arch Streets and its Relation to the City Plan and the New Parkway System.



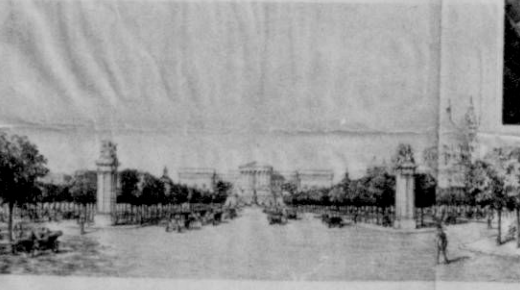
Detailed Plan of the Parkway Showing the University and Arch Streets and its Relation to the City Plan and the New Parkway System.



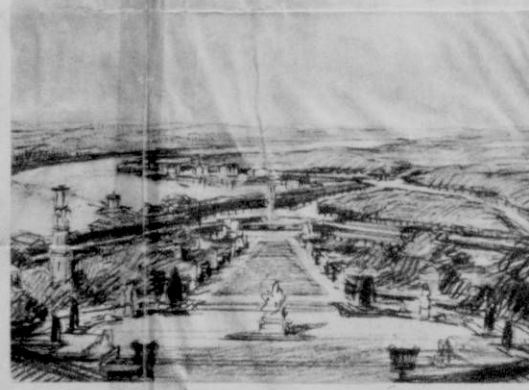
General Plan of Lower Section with University and Arch Streets, Showing the Golden Plan and the Proposed Parkway in the Center of the City.



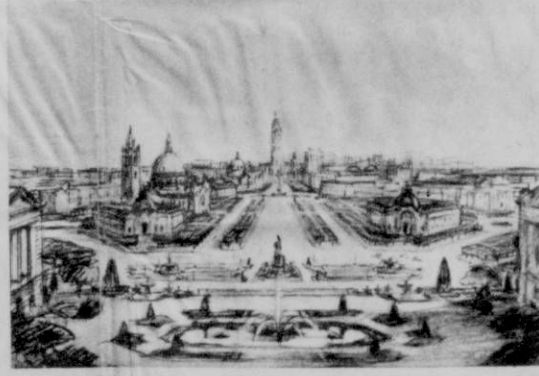
Eastern View, Looking East from the University and Arch Streets, Showing the Golden Plan and the Proposed Parkway in the Center of the City.



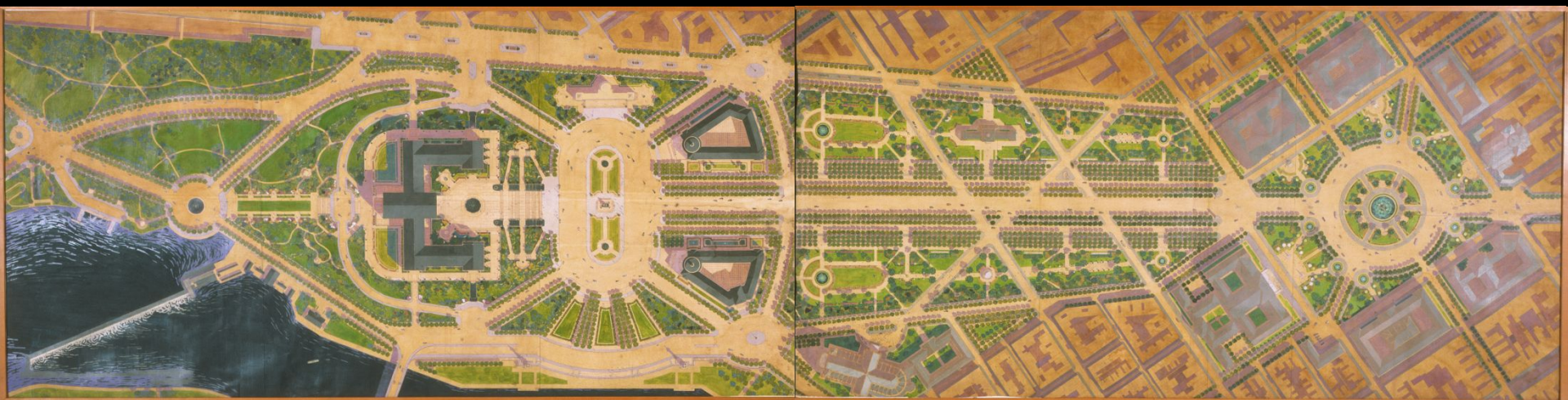
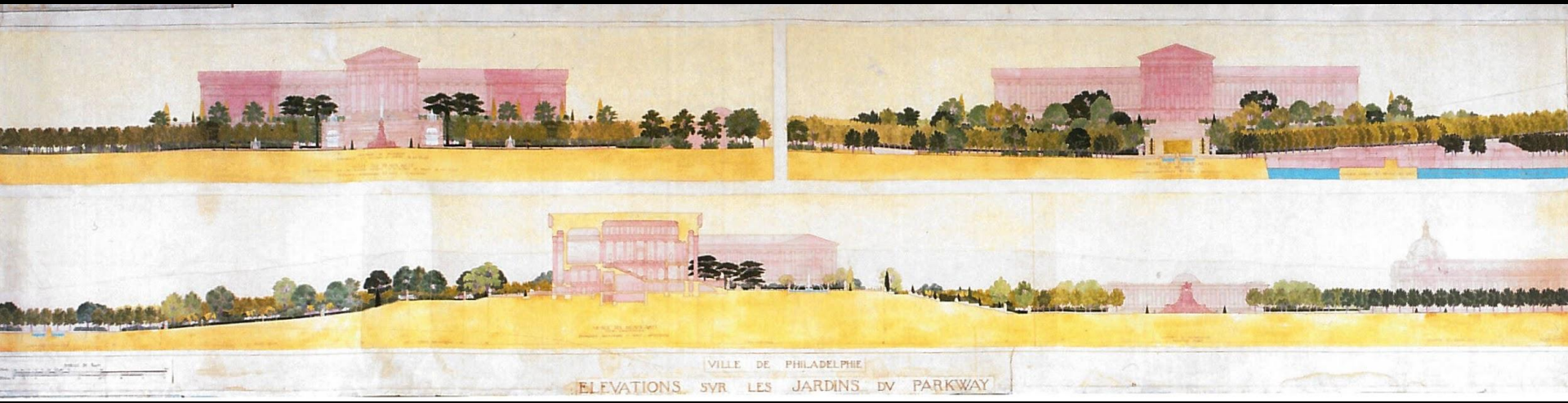
The Parkway, Looking West from the University and Arch Streets, Showing the Golden Plan and the Proposed Parkway in the Center of the City.



South View, Looking South from the University and Arch Streets, Showing the Golden Plan and the Proposed Parkway in the Center of the City.



North View, Looking North from the University and Arch Streets, Showing the Golden Plan and the Proposed Parkway in the Center of the City.



Gréber
ca. February 1919



THE PHILADELPHIA PARKWAY

AS PLANNED FOR

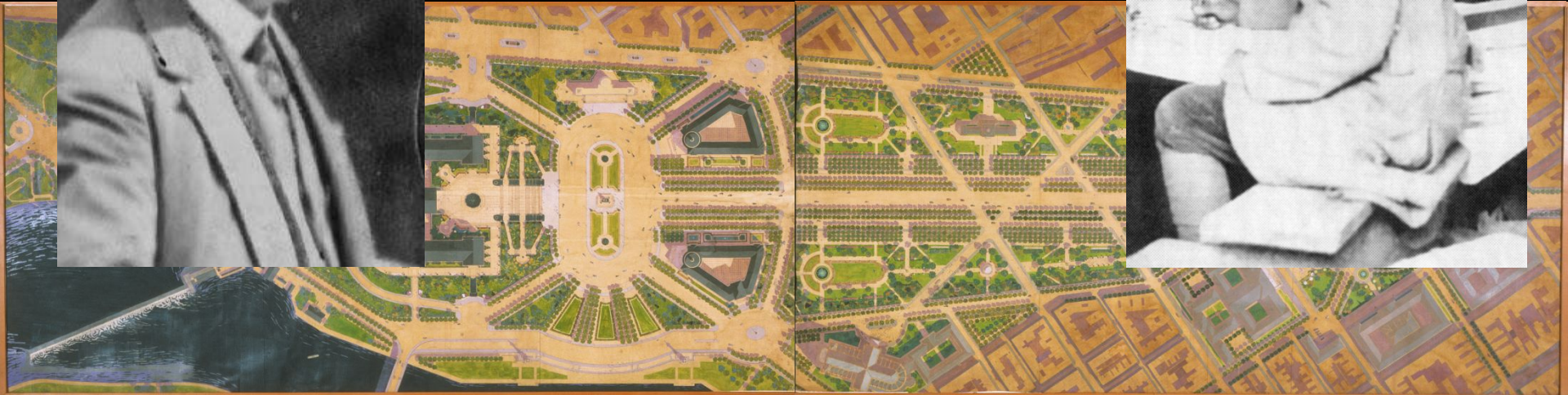
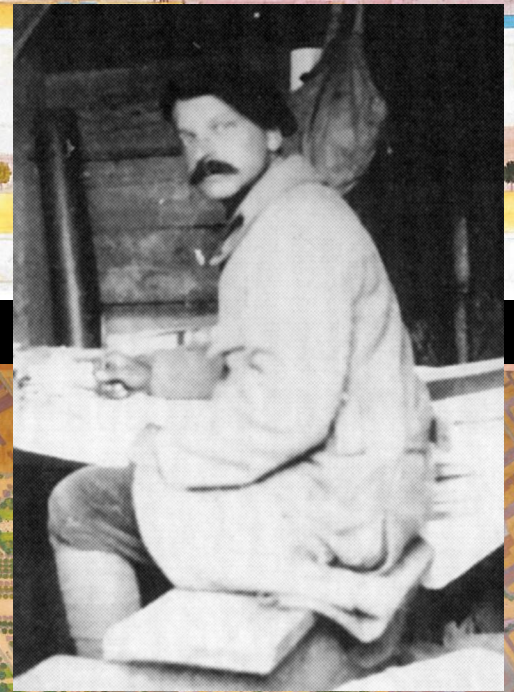
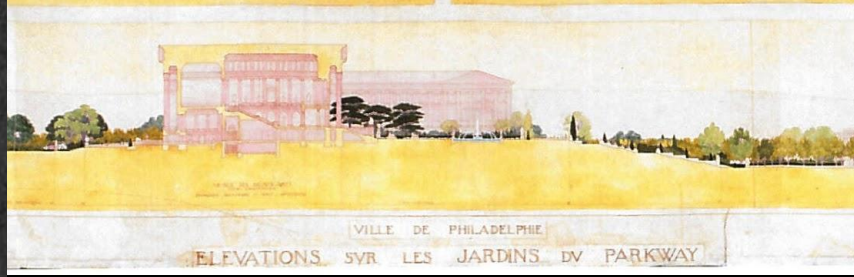
THE FAIRMOUNT PARK AND ASSOCIATION

HORACE TRUMAN
BY C. C. ZANTHON
PAUL D. CRET



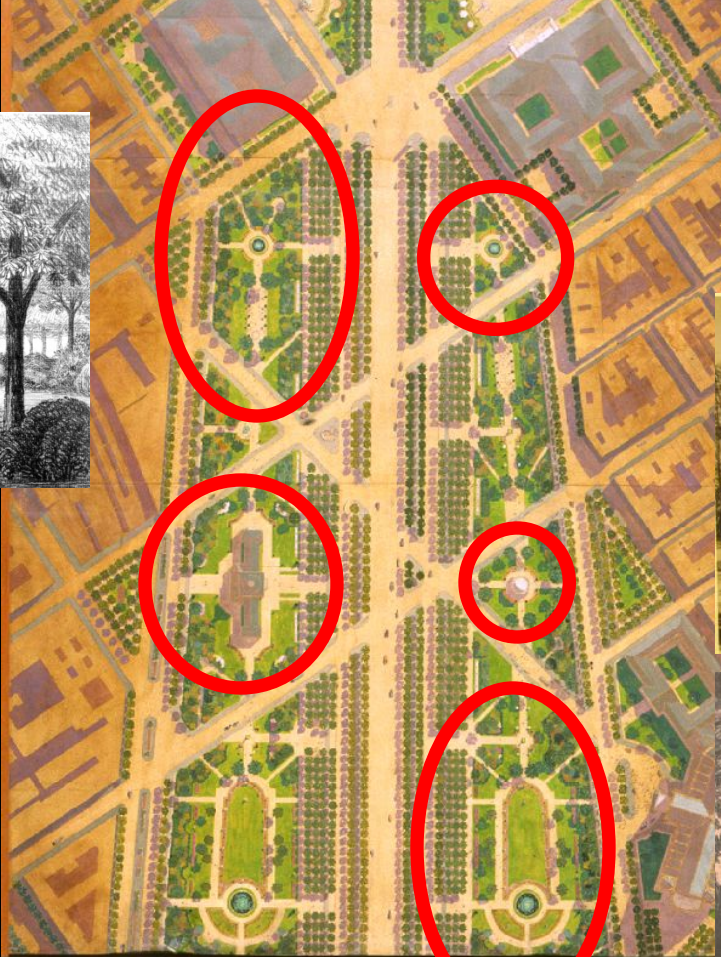
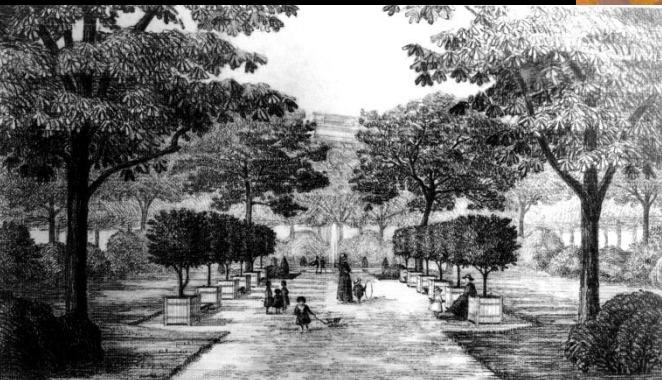
Paul Cret

December 1907

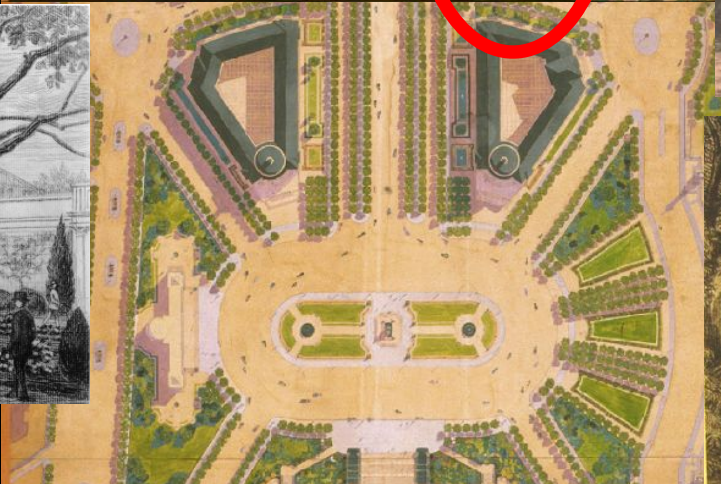
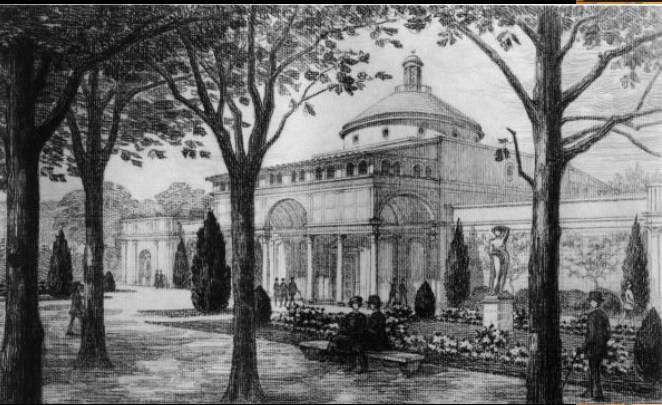


**Gréber
in Philadelphia**

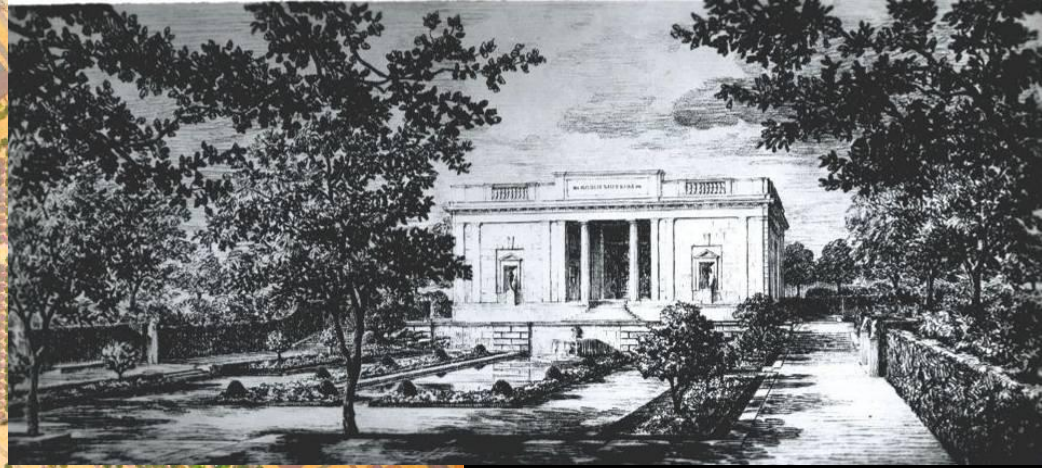
**Cret
in France**



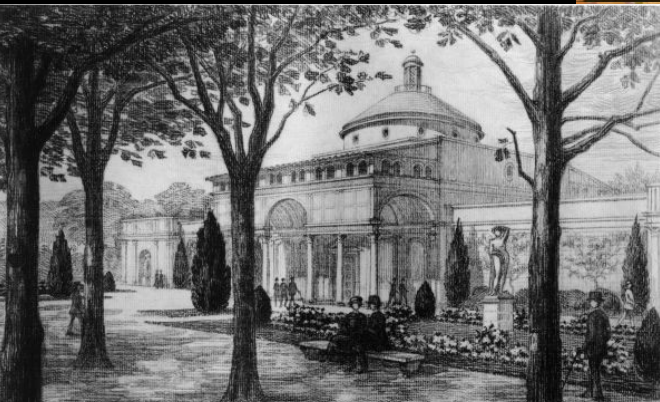
Jacques Gréber
proposed
Parkway gardens
1919



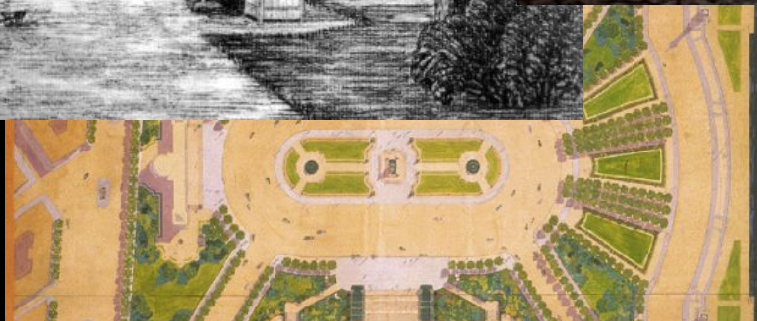
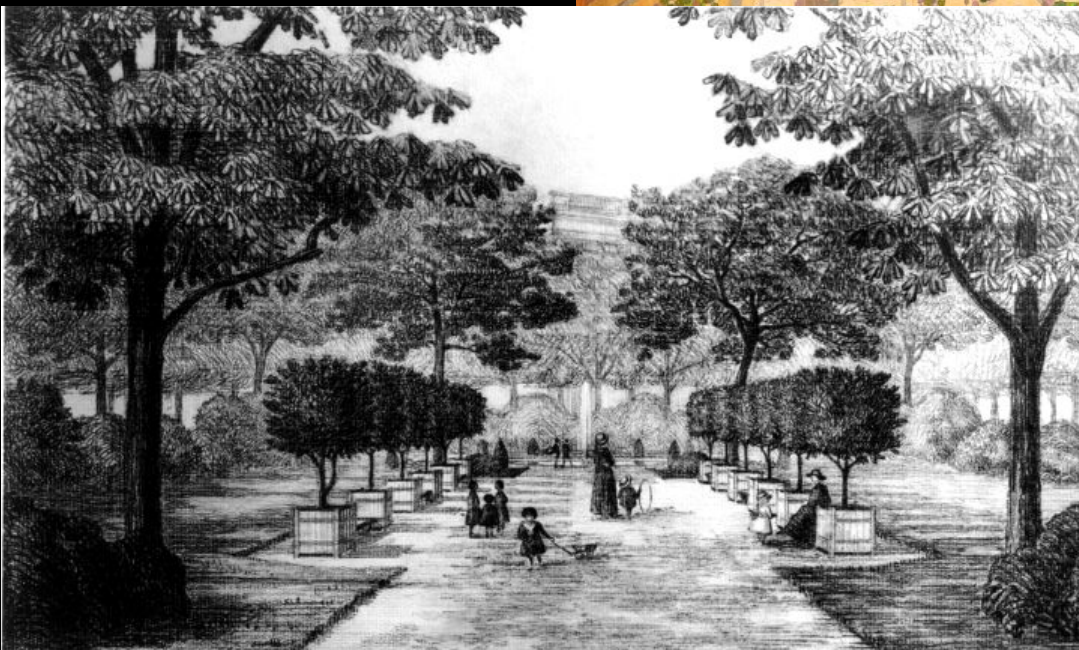
**Gréber
Proposed
Johnson Gallery
1919**



**Gréber and Cret
Rodin Museum
1925-29**

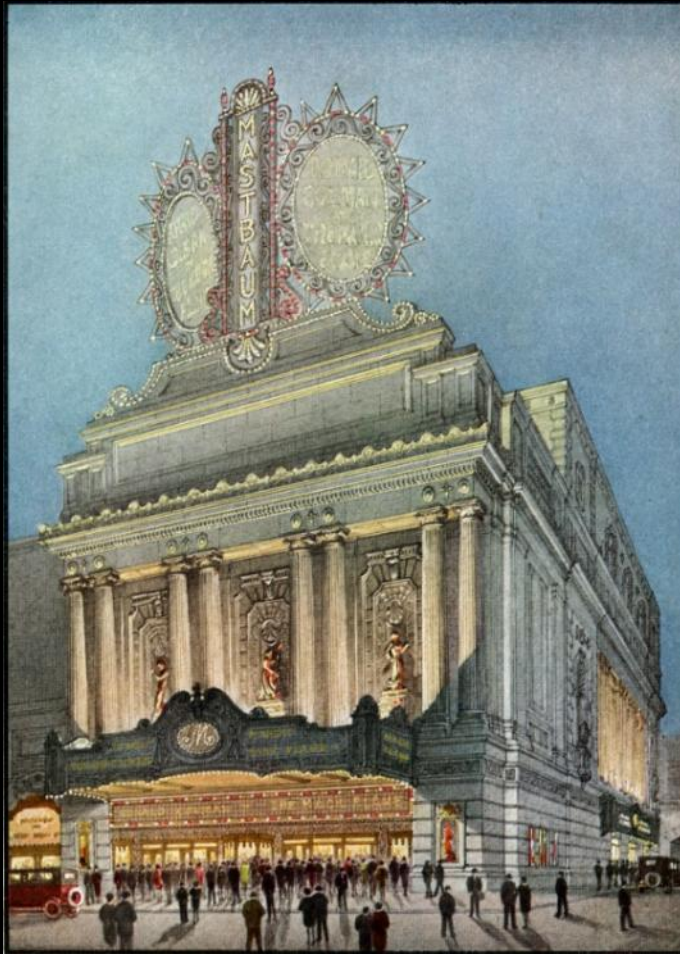


**Gréber
Proposed garden
at 20th Street
and the Parkway
1919**



**Laurie Olin
garden
Barnes Foundation
2009-12**

Two Frenchmen in Philadelphia



**Hoffman and Henon
Jules (Mastbaum Memorial) Theater
Philadelphia, 1926-29**

**Jules Mastbaum
(1872-1926)**



**Paul Cret
in 1925**



Jules Mastbaum



**Jacques Gréber
in 1926**



Jules Mastbaum

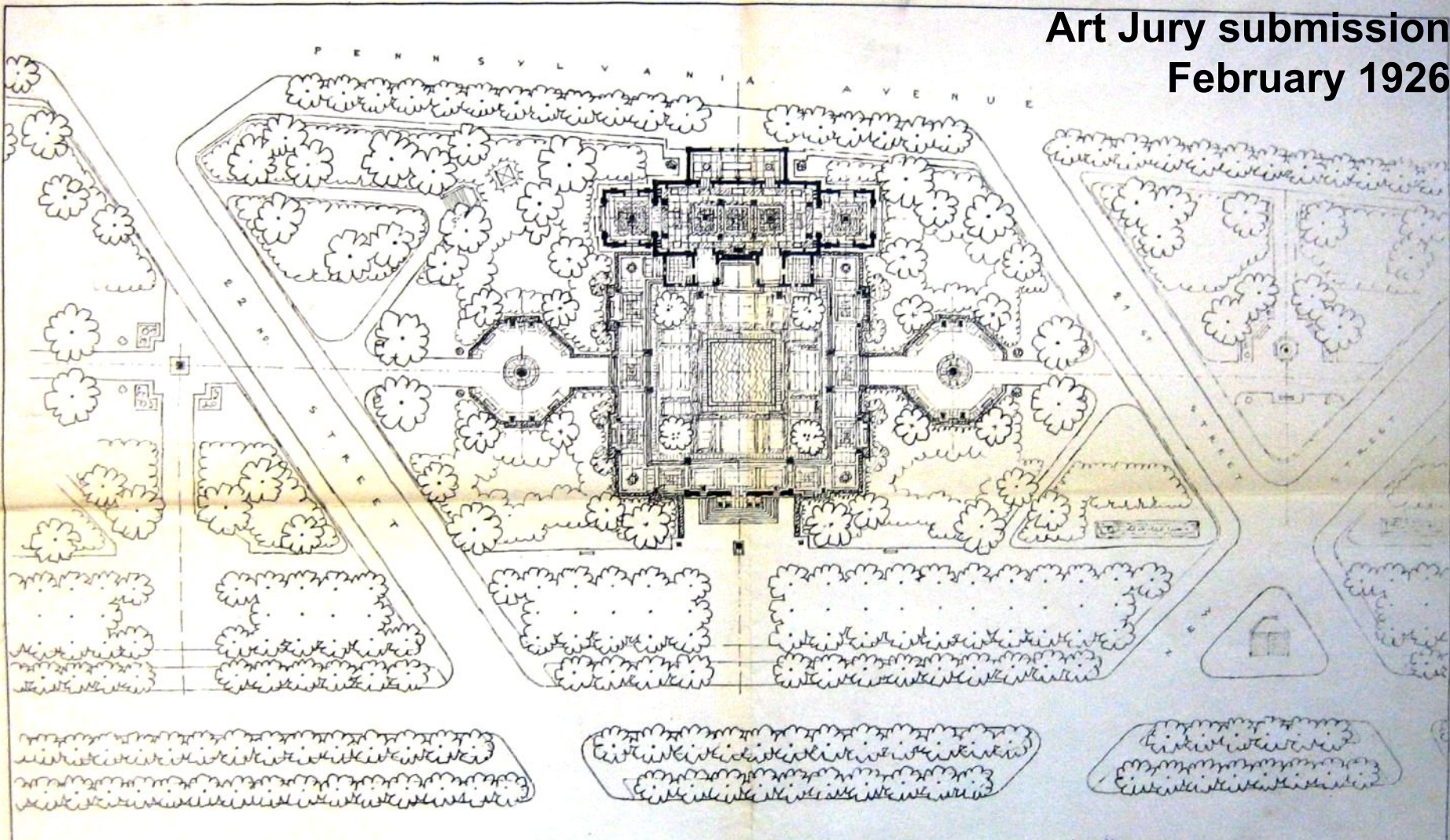


**Jacques Gréber
in 1926**



**Paul Cret
in 1925**

Art Jury submission
February 1926



FONDATION MASTBAUM
PLAN D'ENSEMBLE
MUSEE RODIN
PHILADELPHIE

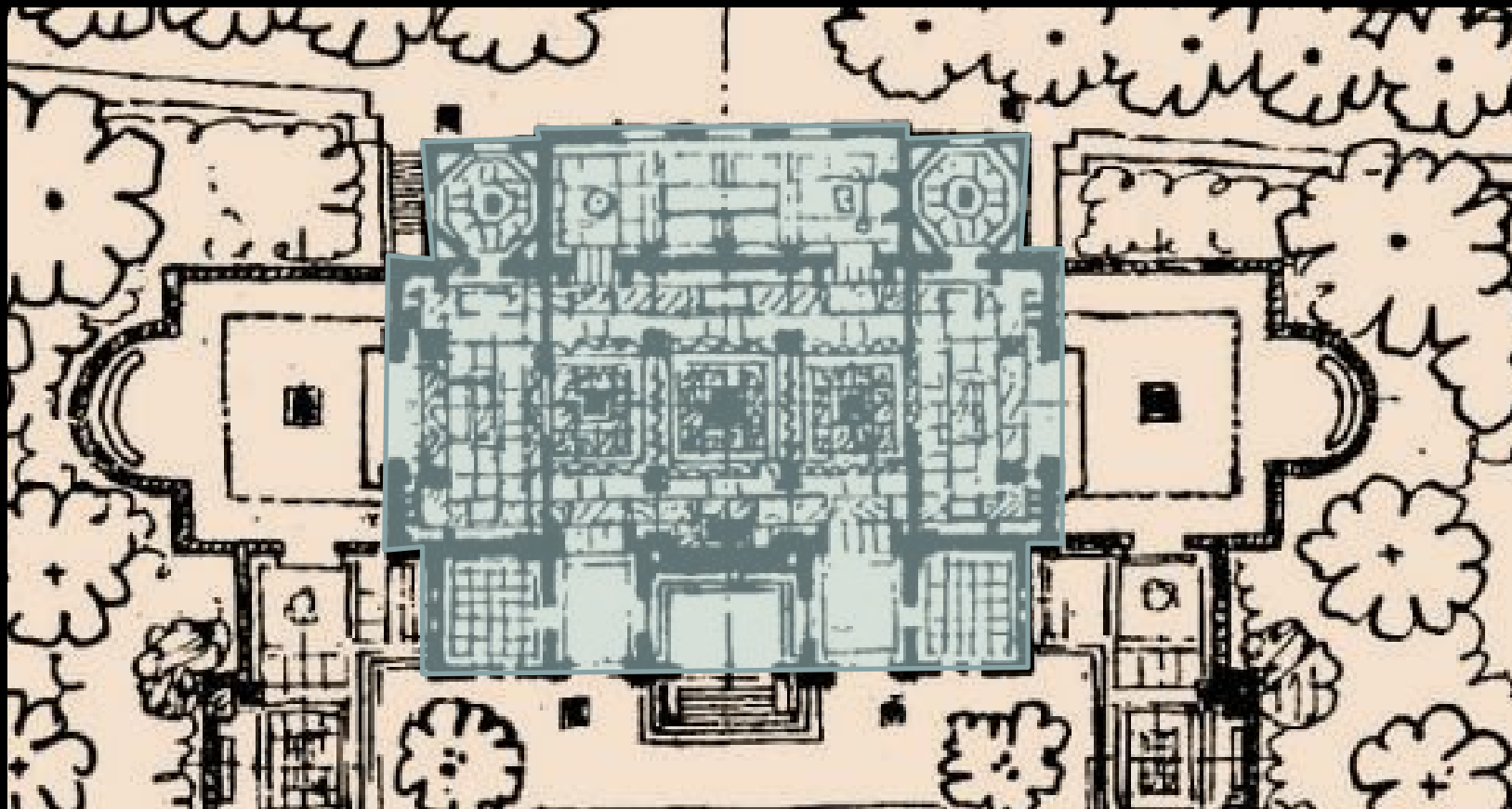
0 10 20 30 40 50 100 150 200 feet
Echelle: 1" = 50'0"

AVANT PROJET
DESSIN N° 1

JACQUES GREBER ARCHITECTE
8489 - 20
PARIS FEVRIER 1926



Revised Art Jury
submission
summer 1926





FAÇADE DE LA COUR DE RÉCRÉATION

**Gréber, Ecole de Pleine Air
Abbeville, 1926**

**Le Corbusier, *Vers une architecture* 1923
(translated into English 1927)**



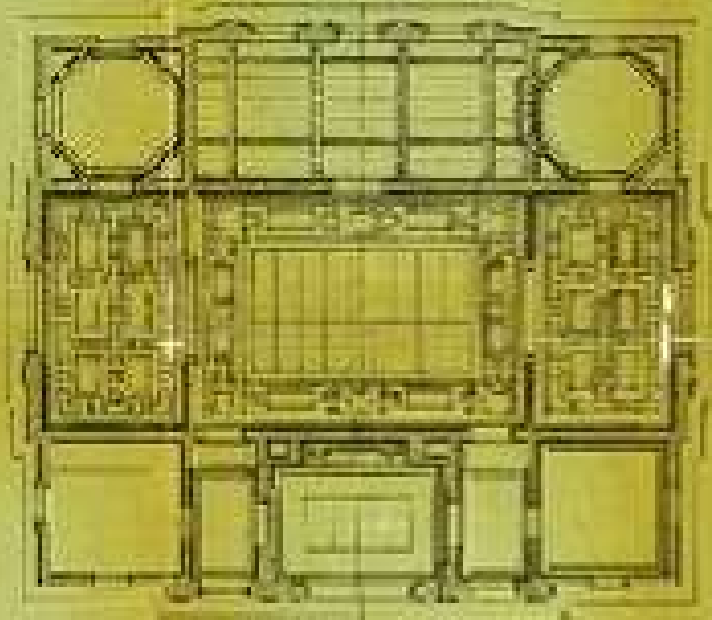
October 1926



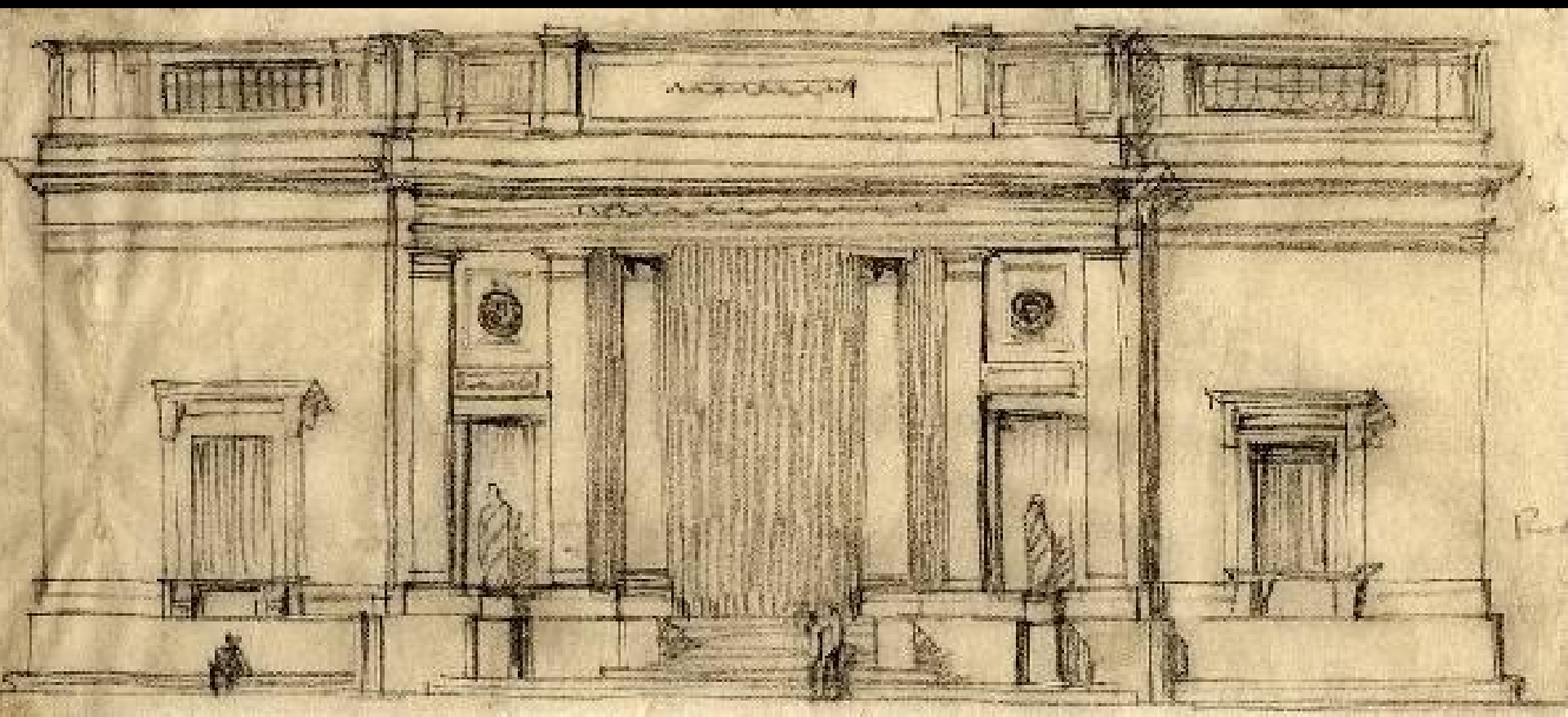
19

E. MASTBAUM FOUNDATION
 MUSEUM OF PHILADELPHIA
 FRONT ELEVATION

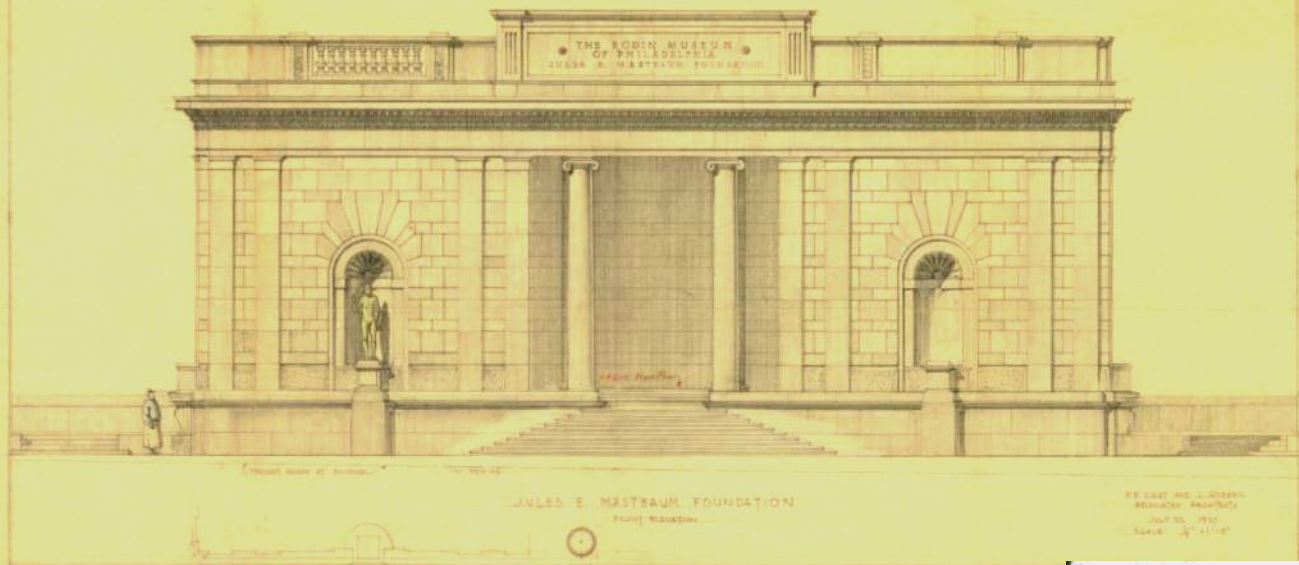
F. P. GREY AND J. GREER
 ASSOCIATE ARCHITECTS
 PARIS OCTOBER 1926



ca. October-November 1926

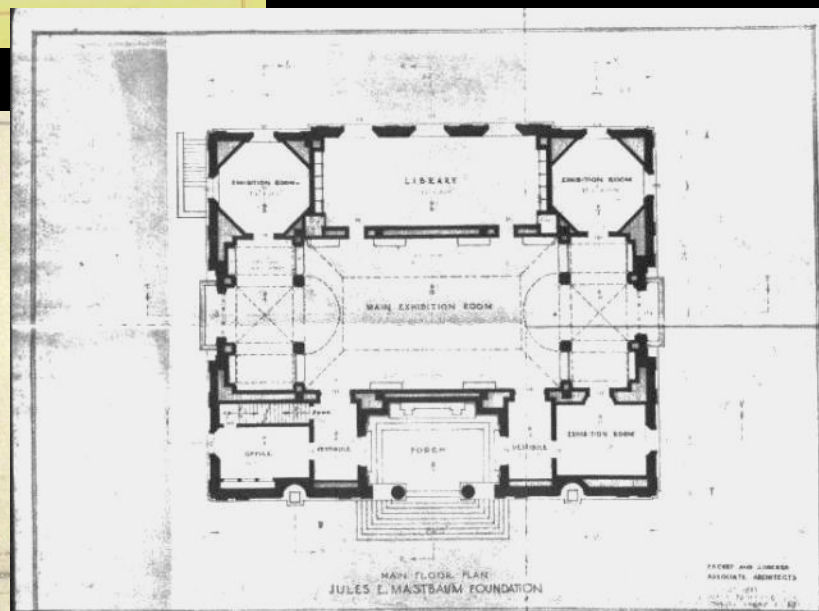
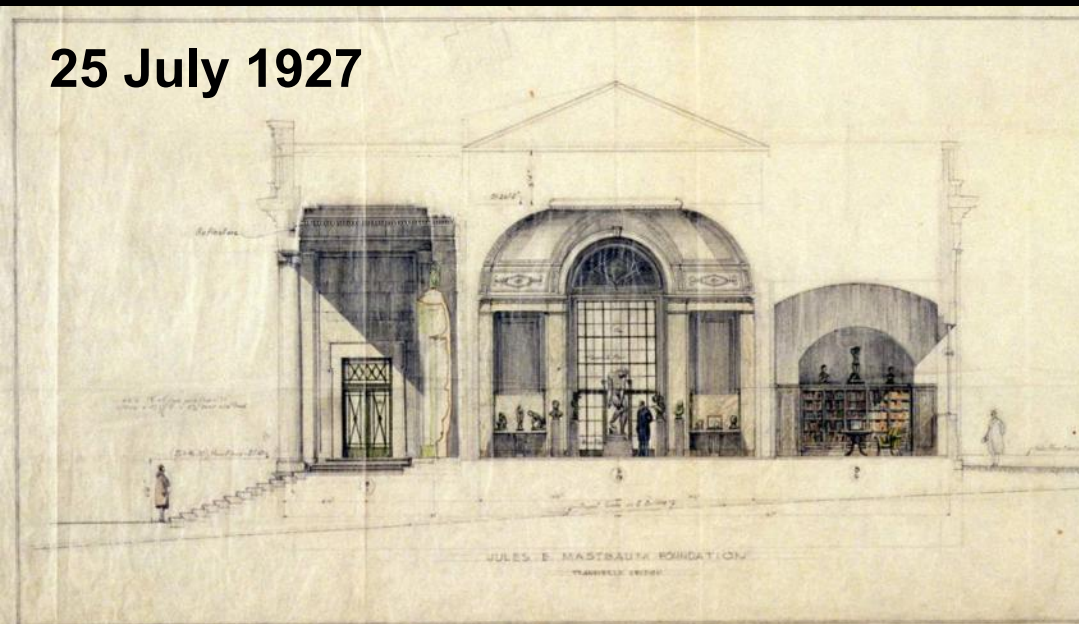


22 July 1927



20 July 1927

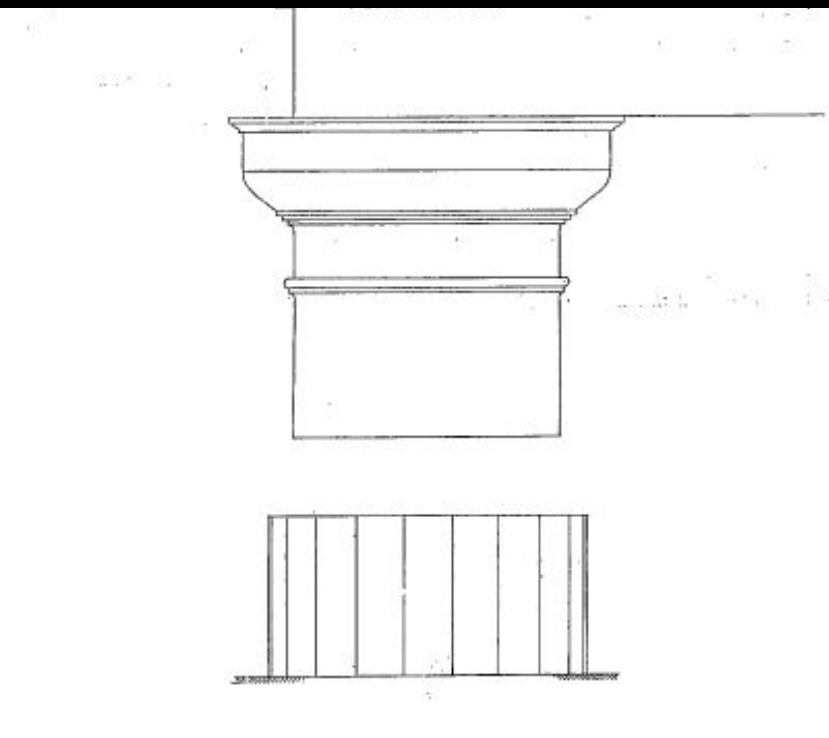
25 July 1927



3



Ange-Jacques Gabriel
Petit Trianon, Versailles
1762-64



Paul Cret and Jacques Gréber
Rodin Museum
1926-29

Choisy Doric order 1909

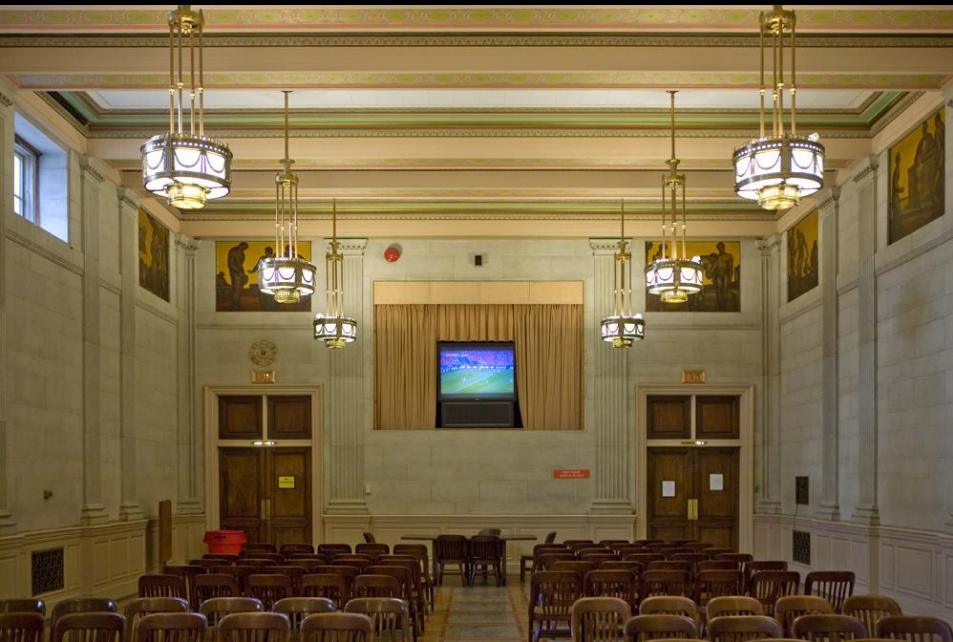


**Cret and Gréber
Rodin Museum
Philadelphia, 1926-29**

Municipal Courts



**West waiting room
American history murals
by Joseph Capoline**



**East waiting room
American work murals
by Vincent Maragliotti**

Courtroom A
Alice Kent Stoddard
Constructive Work



Courtroom B
Stuyvesant Van Veen
Courtroom Scene

Courtroom D
Stuyvesant Van Veen
Modern family





Alice Kent Stoddard *Constructive Work*
Courtroom A

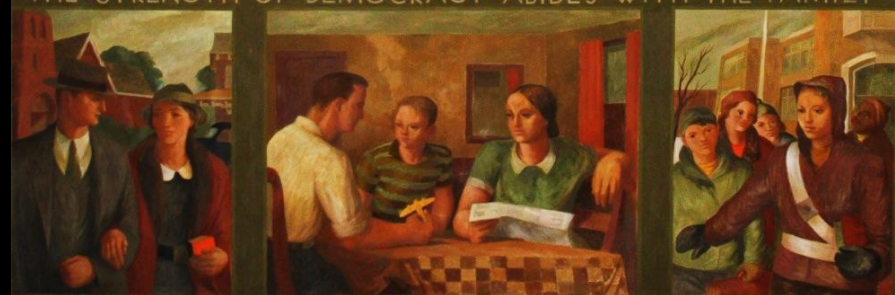
Joseph Hirsch *Adoption*
Courtroom C

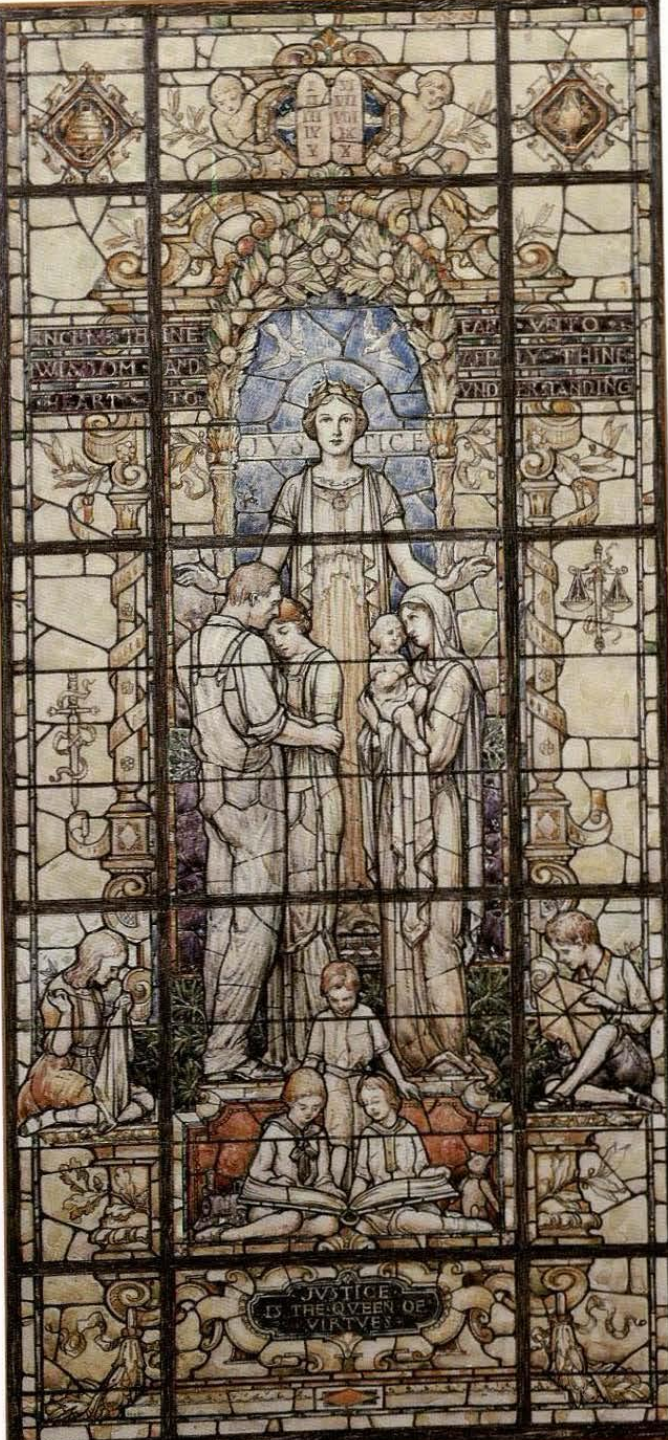


Walter Gardner
Knowledge is the Key to Success
West Conference Room



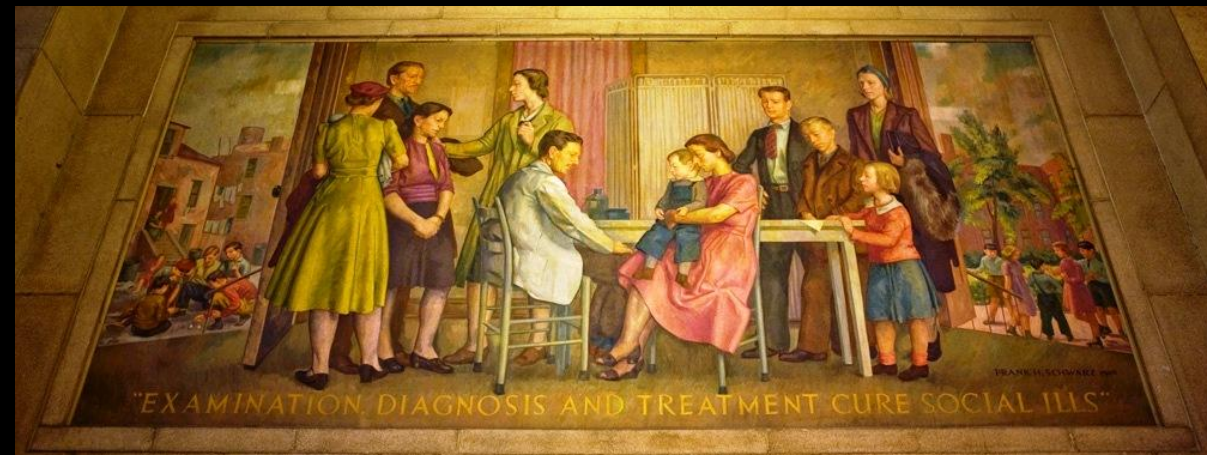
Benton Spruance
The Strength of Democracy
Abides with the Family
East Conference Room





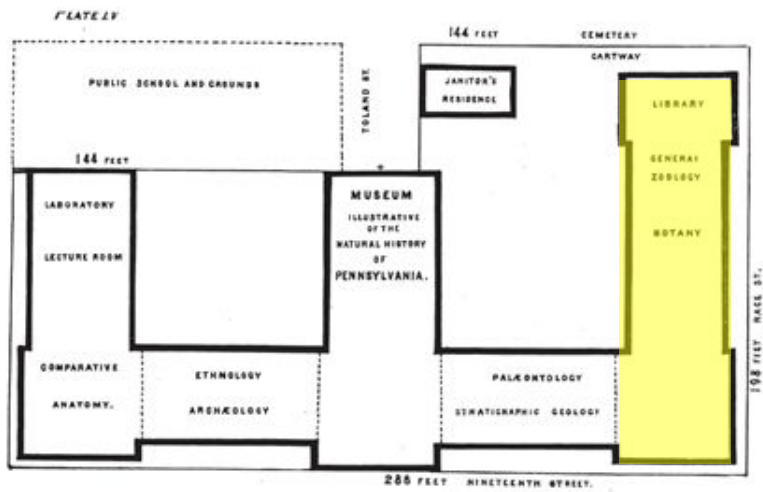
Frank H. Schwartz

***Investigation and Probation
Aid Humanized Justice
Examination, Diagnosis,
and Treatment Cure Social Ills***



***Justice Is the Queen of the Virtues
stained glass by D'Ascenzo Studios***

Academy of Natural Sciences



**James Windrim
Academy of Natural Sciences
1868-76**

**auditorium wing by
John Windrim and
Wilson Brothers, 1889-96**

**Wilson, Harris
and Richards
Academy of
Natural Sciences
library wing
1907-1908**





**James Windrim
Academy of Natural
Sciences
1868-76**



**Wilson, Harris and
Richards
Academy of Natural
Sciences
library wing and
remodeling
1907-1910**

STATE WILL BEGIN ACTIVE FIGHT ON CHESTNUT BLIGHT

Main Line Association Secures \$275,000 Appropriation

COMMISSION OF FIVE WILL DIRECT CRUSADE

Disease, Unless Checked, Experts Declare, Will Wipe Out This Species of Tree in Country

When Governor Tener a few days ago signed a bill carrying with it an appropriation of \$275,000, and authorizing the appointment of a commission of five men to determine what can be done to control the chestnut tree blight, the action of the State's Chief Executive actually marked the final stages of the victory of the campaign that the Main Line citizens' committee has been carrying on for the past year.

The blight, which has wrought widespread destruction, is a fungoid growth that fastens on tree after tree, destroying each one utterly. It started in Eastern Long Island and has been steadily moving westward. Already it has killed practically all the chestnut trees in the neighborhood of New York city and Philadelphia. So far no remedy has been discovered, and the best authorities are agreed that unless some remedy is found this species of tree will be wiped out completely.

Up to date the destruction of the affected trees has proved unavailing, for a single failure in any one region allows the pest to increase and continue its work of destruction.

The only means of checking the blight which has yet been proposed is to carry a line completely around the infected regions and destroy all the trees affected. In Pennsylvania it is proposed to check in this manner the westward progress of the blight, allowing the other sides to go as hopeless.

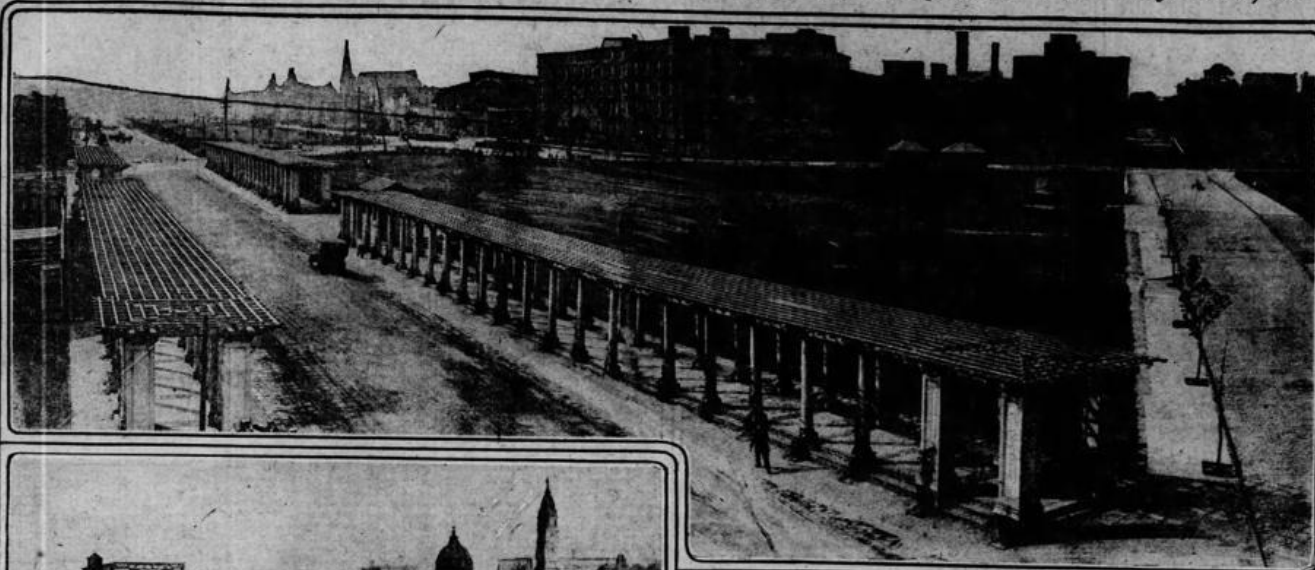
Powers of Commission

The association formed of property owners along the Main Line of the Pennsylvania Railroad has been studying the problem during the past several months and it is through them that the bill was introduced before the Legislature of the State and finally passed.

The bill provides for a commission of five men, leaving the authority to enter any property and inspect trees. Where trees are affected the commission has the authority to notify the owner and prescribe a course of treatment, even up to the destruction of the trees. In cases where the owner refuses to comply with such orders, the commission is empowered to go forward with the course of treatment and levy the cost on the owner of the property. In cases where the removal of a healthy tree is deemed necessary for the checking of the blight, the commission has the authority to do this and pay the owner the assessed valuation of the tree.

June 25, 1911

Rapid Strides Being Made in Development of Philadelphia's Parkway Project



PROPOSED AVENUE FROM CITY HALL TO PARK BECOMING A REALITY

The upper photograph is a panoramic view of the Parkway looking west from Twenty-first street to Fairmount Park, showing the percolos on each side. The view in the lower left hand corner is towards City Hall, while that on the right hand side shows the Parkway, looking towards City Hall, from Green street entrance.

PARKWAY MAKES RAPID PROGRESS TO COMPLETION

Great Boulevard to Be Noted for Beauty of Buildings

HISTORY OF MOVEMENT TRACED FROM 1891

Will Represent Untiring Efforts of Mayor Reuburn and Responsive Councils

From a mere chimerical proposition, an intangible project, the Parkway, that great avenue of beauty, convenience and usefulness, which is to link City Hall with Fairmount Park, the great pleasure ground of the people, has, within the last several years, as a result of the untiring efforts of Mayor Reuburn and a responsive Councils, been developed to such a point that the boulevard, with its contemplated imposing and architecturally magnificent structures, devoted to education, art and government, which are to line its course, is fast nearing a reality.

With the favorable recommendations by Councils' Finance Committee on Thursday of several ordinances, appropriating sums for the further purchase of property and toward the erection of a Free Library, suitable building for the Free Library, another step in the progress of the work of completing the project with the least possible delay was made. One of these measures give the sum of \$212,125 for the acquisition of a number of properties in the vicinity of Nineteenth and Vine streets, part of which location has been set aside for the new building for the Free Library. Another measure recommended was that appropriating \$1,600,000 from the loan of \$11,200,000 of 1908, for the erection of the library building.

The same committee on the same day approved an ordinance which gives to the American Philosophical Society, in exchange for a site owned and occupied by it at Fifth and Chestnut streets, a location on the Parkway at Sixty-third and Cherry streets, running back to Alplertree street, and providing for the purchase of necessary properties from loan money.

\$250,000 Recently Appropriated
Within the last few months Councils appropriated the \$250,000 of the recently negotiated \$1,600,000 advance an old loan toward starting work upon the municipal art gallery, which is to surround the old reservoir at the Park extending to the Parkway at Sixty-third and Cherry streets, running back to Alplertree street, and providing for the purchase of necessary properties from loan money.

In the meantime Councils have appropriated \$50,000 for the preparation of plans and the beginning of work on the convention hall, which is among the structures contemplated by the voters at the great Parkway project. When the loan for \$5,750,000 of the \$11,500,000 loan recently authorized by the voters and now being advertised is negotiated there will be \$1,000,000 more for Parkway purposes. Moreover, the committee has if another loan is found necessary before the expiration of his term it will contain an item for continuing work on the art gallery, which he would like to



LOVE FOR CANINE FRIEND MAY HAVE CAUSED DEATH
Last Place Visited by Suicide Was Dog's Grave

Mrs. MARY ANN DAW, 24—W. E. Daw, 47, of the city, here last winter to see his mother, Mrs. C. W. Wernich, committed suicide yesterday by taking carbolic acid. A few days ago his building, his companion for five years, was poisoned and grief over his loss is supposed to have been part of the cause for Daw's act. His co-counsel, Mr. Wernich, began

HANDSOME PRIZES FOR WINNERS OF INQUIRER PUZZLES

Answers and Awards

PENCHANT FOR KISSING CALLED "OSCULOMANIA"
Columbus Judge Fines Woman With Strange New Disease

Special to The Inquirer.
COLUMBUS, June 24.—Numerous defenseless men who ventured to "wade down" Front street late last night were attacked and made victims of Ella Dunn, who went on a kissing spree and kissed everything in sight for miles. Her romantic adventure ended in the Police Court this morning, when Judge Osborne coined a new word, "osculomania," to fit her case, and recommended

LOCAL TEACHERS TO BOOM CITY AS SCHOOLS' CENTRE

MARYLAND THINKS PRIMARY ELECTION LAW IS COMPLEX

TO TRY TO IMPROVE TRADE RELATIONS WITH OLD WORLD



